



OHIO  
UNIVERSITY

*Office of Institutional Research*

# Ohio University

# Fact Book

AUGUST 2014



# Table of Contents

## Overview

Executive Summary.....	3
Ohio University: A Brief History.....	5
The Vision of a University.....	7
Governance - Trustees, Administrators, Deans, Senates.....	8

## Students

Student Headcount by Campus, Fall 2013.....	13
Student Headcount, 7 Years.....	13
Fall Quarter Student Headcount by College, 7 Years.....	14
Student FTE by Campus, Fall 2013 .....	15
Student FTE, 7 Years .....	15
Fall Quarter Student FTE by College, 7 Years .....	16
Student Distribution by State of Residence, Fall 2013 (map).....	17
Student Distribution by Ohio County of Residence, Fall 2013 (map).....	18
Degrees Awarded by Campus, 2012-13.....	19
Degrees Awarded, 7 Years.....	19
Degrees Awarded by College, 7 Years .....	20
Admission Statistics by Campus, Fall 2013.....	21
Admission Statistics, 7 Years.....	21
New First-Year Admission Statistics by College, 7 Years .....	22
Graduate Admission Statistics by College, 7 Years.....	23
First-Year Student Retention, 7 Years .....	24
Graduation and Transfer-Out Rates by Campus, 2007 Freshman Cohort.....	25
Cumulative Graduation Rates, 7 Years .....	26
Cumulative Graduation Rates by College, 7 Years .....	27
Student Enrollment by Race/Ethnicity and Gender, 7 Years .....	28
Students with Double Majors, Fall 2013 .....	29
Majors with Greatest Student Enrollment, Fall 2013 .....	30
Number of Majors, Programs and Degrees Offered.....	30

## Faculty/Staffing

Full and Part Time Personnel by Campus, Fall 2013 .....	33
Number of Group I Faculty, 7 Years .....	33
Number of Group I Faculty by College and Campus, 7 Years.....	34
Athens Campus Budgeted FTE, Credit Hrs Taught, Student/Faculty Ratios, 7 Yrs .....	35
Arts & Sciences Budgeted FTE, Credit Hrs Taught, Student/Faculty Ratios, 7 Yrs .....	36
Business Budgeted FTE, Credit Hrs Taught, Student/Faculty Ratios, 7 Yrs .....	37
Communication Budgeted FTE, Credit Hrs Taught, Student/Faculty Ratios, 7 Yrs.....	38
Education Budgeted FTE, Credit Hrs Taught, Student/Faculty Ratios, 7 Yrs.....	39
Engineering & Tech Budgeted FTE, Credit Hrs Taught, Student/Faculty Ratios, 7 Yrs.....	40
Fine Arts Budgeted FTE, Credit Hrs Taught, Student/Faculty Ratios, 7 Yrs.....	41
Health Sci/Professions Budgeted FTE, Credit Hrs Taught, Student/Faculty Ratios, 7 Yrs..	42
University College Budgeted FTE, Credit Hrs Taught, 7 Yrs .....	43
Honors Tutorial College Budgeted FTE, 7 Yrs .....	44
International Studies Budgeted FTE, 7 Yrs .....	44
Voinovich School Budgeted FTE, 7 Yrs.....	44

## **Faculty/Staffing, *continued***

---

Group I Faculty Eligible to Retire, 2013-14.....	45
Full-Time Administrators Eligible to Retire, 2013-14 .....	46
Full-Time Classified Eligible to Retire, 2013-14.....	47
Academic Support Units Budgeted FTE, 7 Years.....	48

## **Alumni**

---

Alumni Distribution by State of Residence (map).....	53
Alumni Distribution by Ohio County of Residence (map) .....	54
Annual Private Gifts, 7 Years.....	55

## **Resources & Facilities**

---

Source of Revenues by Type, 7 Years .....	59
University Expenditures by Type, 7 Years .....	59
Tuition and Room Fees, 7 Years .....	60
Grants and Contracts, 7 Years .....	61
Financial Aid Awarded by Type, 7 Years.....	61
Library Holdings & Resources by Type, 7 Years .....	62
Physical Facilities by Room Type, Fall 2013 .....	63

## **Comparative Data**

---

Ohio University Peers - Peer Assessment.....	67
Ohio University Peers - Freshman Admissions Selectivity .....	67
Ohio University Peers - Retention and Graduation Rates .....	68
Ohio University Peers - Student Experience .....	68
Ohio University Peers - Finances .....	69
Ohio University Peers - Faculty Salary.....	70
Ohio University Peers - Race/Ethnicity.....	70
Ohio University Peers - Institutional Characteristics.....	71
Ohio University Peers - Tuition & Financial Aid .....	71
Ohio Public Universities: Headcount Enrollment, Main and Regional Campuses.....	72
Ohio Public Universities: Degrees Awarded, Main and Regional Campuses.....	73
Institutional Outcomes Measures .....	74
First-Year (Freshmen) Cohort Graduation Rates, Main Campuses .....	75
First-Time Student Persistence Rates, Main Campuses.....	75
Full-Time Undergraduate and Graduate Fees, Main and Regional Campuses .....	76
Award of Financial Aid to Full-Time Freshmen, Main and Regional Campuses.....	77
Ohio Public Universities Comparative Data Measures, Main Campuses.....	78
Comparison of Mean ACT Scores .....	80

## **Historical Information**

---

Enrollment History by Gender: 1984 - 2013 .....	82
Enrollment History by Student Rank: 1994 - 2013 .....	83
History of Degrees Granted, 1983-84 to 2012-13 .....	84
Changes in Budget and Faculty-Staff Compensation, 1993-94 to 2013-14 .....	85

# Overview Contents

---

The overview section contains an executive summary, a short narrative history of Ohio University, the university's vision and mission statements, along with a list of the university's peer institutions, and a listing of the university's governance and administrative structure.

- Executive Summary
- Ohio University: A Brief History
- The Vision of a University
- Ohio University Governance and Administration



## Executive Summary

---

### ***Students***

---

- 22,657 students enrolled at the Athens campus (28,786 including eLearning), 10,071 students enrolled at regional campuses for a total enrollment of 38,857, Fall 2013
- 78% of the students enrolled at the Athens campus are Ohio residents, with the greatest number of students coming from Franklin county
- 8,369 total degrees awarded from the university in 2012-2013
- 20,765 new first-year students applied for admission in Fall 2013, with 15,149 admitted and 4,244 students who enrolled at the university
- 4,598 new graduate students applied in Fall 2013, with 2,060 admitted and 1,349 students who enrolled
- The first-year student retention rate for the Athens campus is 79%
- 67% of undergraduates enrolled at the Athens campus graduate within 6 years (the 3rd highest public graduation rate in the state of Ohio), with an additional 27% of students who transferred to another institution
- Biological Sciences is the undergraduate major with the largest number of students enrolled, and Nursing is the graduate major with the largest number of students enrolled
- 288 undergraduate majors from which to choose
- The mean ACT score of first-year undergraduate students is 24, which is higher than both the national and state averages; 17% of the first-year undergraduate students ranked in the top 10% of their high school class

### ***Faculty/Staffing***

---

- 1,100 full-time faculty, 973 part-time faculty and 4,958 total employees
- 20:1 student to faculty ratio at the Athens campus in Fall 2013

### ***Alumni***

---

- 198,077 alumni living in the United States with an additional 7,129 alumni living outside the United States
- Annual private gifts from alumni, corporations/foundations, and friends/organizations totaling \$18 million

### ***Resources/Facilities***

---

- Actual expenditures of nearly \$650 million for all university operations on all campuses, and an annual payroll exceeding \$397 million
- Annual grants & contracts exceeding \$64 million and financial aid awards in excess of \$397 million
- Library holdings of 3,347,476 total volumes (print and electronic) and 69,009 current serials (print and electronic) in 2012-2013





## OHIO UNIVERSITY: A Brief History

---

Ohio University was chartered by the state of Ohio in 1804 and is the oldest university in the Northwest Territory. Located in the scenic Appalachian foothills of southeastern Ohio, its classic residential campus is one of the most attractive in the nation. The charm of tree-lined brick walkways on the university's College Green makes you feel as if you are at a small college rather than a large university. One can walk between most campus buildings within about 10 minutes.

It is possible to live a mile away from the university buildings in a residential neighborhood and walk to work, or to live on a farm within a 20 minute drive. The city of Athens is surrounded by a patchwork of hardwood forests that constitute the Wayne National Forest.

Under the new 2010 Carnegie Foundation for the Advancement of Teaching classifications, Ohio University is designated a Research University (high research activity) under the Basic Classification category. Only 99 schools – 2.1 percent – of the 4,634 schools assessed by the Carnegie Foundation are classified as a research university (high research activity). Ohio University's institutional peers are all classified as either a research university (very high research activity) or a research university (high research activity).

Ohio University's roots are in post-Revolutionary War America. In 1786 a group of veterans petitioned Congress to purchase, through the Ohio Company of Associates, one-and-a-half million acres north and west of the Ohio River.

Revenue from two townships in the Ohio Company purchase was set aside for support of a university. In 1808 the university opened with three students, and in 1815 awarded its first two bachelor's degrees.

The university graduated a total of only 145 students until after the Civil War. By 1920 it had 1,072 students, but it was not until after World War II that the university began to approach its present size.

In the 1950s the student population grew from 4,600 to 8,000, and the 1960s saw enrollment burgeon from about 10,000 to some 18,000 students on the Athens campus. In the early 1970s, during the Vietnam era, the student population fell below 13,000. Today the Athens campus serves over 22,000 students.

Since 1946 the university's service as the major educational and cultural institution in southeastern Ohio has included regional campuses in Chillicothe, Ironton, Lancaster, St. Clairsville, and Zanesville. Today, the regional campuses collectively enroll about 10,000 students, making the full-time, part-time, and eLearning enrollment for Ohio University over 38,000.

University actual expenditures total nearly \$650 million for all of its operations on all of its campuses. Ohio University is the largest employer in Athens County, with an annual payroll exceeding \$397 million.



## The Vision of a University

---

### Vision Statement

Ohio University will be the nation's best transformative learning community where students realize their promise, faculty advance knowledge, staff achieve excellence, and alumni become global leaders.

### Mission Statement

Ohio University holds as its central purpose the intellectual and personal development of its students. Distinguished by its rich history, diverse campus, international community, and beautiful Appalachian setting, Ohio University is known as well for its outstanding faculty of accomplished teachers whose research and creative activity advance knowledge across many disciplines.

### Peer Institutions

<u>Name</u>	<u>Location</u>	2012-13 <u>Enrollment</u>	<u>Web Site</u>
<b>Ohio University</b>	<b>Athens, OH</b>	<b>27,402</b>	<b><a href="http://www.ohio.edu/">http://www.ohio.edu/</a></b>
Colorado State University	Fort Collins, CO	30,659	<a href="http://www.colostate.edu/">http://www.colostate.edu/</a>
Iowa State University	Ames, IA	30,748	<a href="http://www.iastate.edu/">http://www.iastate.edu/</a>
Oklahoma State University	Stillwater, OK	25,708	<a href="http://www.okstate.edu/">http://www.okstate.edu/</a>
Oregon State University	Corvallis, OR	26,363	<a href="http://oregonstate.edu/">http://oregonstate.edu/</a>
University of Missouri – Columbia	Columbia, MO	34,704	<a href="http://www.missouri.edu/">http://www.missouri.edu/</a>
University of New Hampshire	Durham, NH	15,267	<a href="http://www.unh.edu/">http://www.unh.edu/</a>
University of Rhode Island	Kingston, RI	16,451	<a href="http://www.uri.edu/">http://www.uri.edu/</a>
University of South Carolina – Columbia	Columbia, SC	31,288	<a href="http://www.sc.edu/">http://www.sc.edu/</a>
University of Utah	Salt Lake City, UT	32,388	<a href="http://www.utah.edu/">http://www.utah.edu/</a>
West Virginia University	Morgantown, WV	29,707	<a href="http://www.wvu.edu/">http://www.wvu.edu/</a>

Web Link for further information: <http://www.ohio.edu/instres/univ/peerstudy/index.html>

## 8 Overview

# Ohio University: Governance and Administration

---

### BOARD OF TRUSTEES

Sandra J. Anderson  
Cary R. Cooper  
Janetta King  
Dave Scholl  
David A. Wolfort, Vice Chair

David Brightbill, Chair  
N. Victor Goodman  
Kevin B. Lake  
Janelle Simmons

Julie Mann Keppner, Chair, Ohio University Alumni Association  
Keith Wilbur, Student  
J. Patrick Campbell, National  
Stephen T. Golding, Treasurer  
Ben Stuart, Faculty

Sharmaine Wilcox, Student  
Peggy Viehweger, National  
Peter C. Mather, Secretary  
David Thomas, Faculty

### PRESIDENT AND VICE PRESIDENTS

President of the University  
Executive Vice President and Provost  
Vice President for Finance and Administration  
Vice President for Student Affairs  
Vice President for University Advancement  
Vice President for Research and Creative Activity  
and Dean of the Graduate College

Roderick J. McDavis  
Pamela J. Benoit  
Stephen T. Golding  
Ryan T. Lombardi  
J. Bryan Benchoff  
Joseph C. Shields

### ACADEMIC COLLEGES AND REGIONAL CAMPUS DEANS

College of Arts and Sciences, Dean  
College of Business, Dean  
Scripps College of Communication, Dean  
Patton College of Education, Dean  
Russ College of Engineering and Technology, Dean  
College of Fine Arts, Dean  
College of Health Sciences and Professions, Dean  
Heritage College of Osteopathic Medicine, Dean  
University College, Dean  
Honors Tutorial College, Dean  
George Voinovich School, Dean  
Executive Dean of Regional Campuses  
Ohio University - Chillicothe, Dean  
Ohio University - Eastern, Dean  
Ohio University - Lancaster, Dean  
Ohio University - Southern, Dean  
Ohio University - Zanesville, Dean

Robert Frank  
Hugh D. Sherman  
Scott Titsworth  
Renee A. Middleton  
R. Dennis Irwin  
Margaret Kennedy  
Randall Leite  
Kenneth H. Johnson  
Elizabeth P. Sayrs  
Jeremy W. Webster  
Mark Weinberg  
William R. Willan  
Martin T. Tuck  
Paul Abraham  
James M. Smith  
Nicole Pennington  
Jenifer Cushman

## Ohio University: Governance and Administration

---

### FACULTY SENATE

Beth Quitslund, Chair

Katie Hartman, Secretary

David Thomas, Vice Chair

### ADMINISTRATIVE SENATE

Cathy Waller, Chair

Jessica Wingett, Vice Chair

Wendy Rogers, Secretary

Timothy Epley, Treasurer

### CLASSIFIED SENATE

Maryann Lape, Chair

Christi Lee, Secretary

Cheri Sheets, Treasurer

Cheri Sheets, Chair-Elect

Amy Meeks, Secretary-Elect

Patricia Palmer, Treasurer-Elect

### GRADUATE STUDENT SENATE

Carl Smith, President

Hashim Pashtun, VP Admin & Finance

Kazi Silmi, VP Communication

Hannah Farchione, VP Committees & Legislative Affairs

### STUDENT SENATE

Megan Marzec, President

Carter Phillips, Treasurer

Caitlyn McDaniel, Vice President



# Student Contents

---

The student section contains data on student enrollment and FTE, as well as data concerning the number of students receiving degrees from the university. Also contained in this section are admission statistics for new first-year students and graduate students, and student retention and graduation rates.

- Student Data Definitions
- Student Headcount by Campus: Fall 2013
- Student Headcount: Fall 2007 – Fall 2013
- Fall Quarter Student Headcount by College: Fall 2007 – Fall 2013
- Student FTE by Campus: Fall 2013
- Student FTE: Fall 2007 – Fall 2013
- Fall Quarter Student FTE by College: Fall 2007 – Fall 2013
- Student Distribution by State of Residence: Fall 2013
- Student Distribution by County of Residence: Fall 2013
- Degrees Awarded by Campus: 2012 – 2013
- Degrees Awarded: 2006-07 – 2012-13
- Degrees Awarded by College: 2006-07 – 2012-13
- Admission Statistics by Campus: Fall 2013
- Admission Statistics: Fall 2007 – Fall 2013
- New First-Year Undergraduate Admission Statistics by College: Fall 2007 – Fall 2013
- Graduate Admission Statistics by College: Fall 2007 – Fall 2013
- First-Year Student Retention by Campus and College: 2006 to 2007 – 2012 to 2013
- Graduation and Transfer-Out Rates by Campus: 2007 Freshman Cohort
- Cumulative Graduation Rates: 2003 – 2007 Freshman Cohorts
- Cumulative Graduation Rates by College: 2003 – 2009 Freshman Cohorts
- Student Enrollment by Race/Ethnicity and Gender: Fall 2007 – Fall 2013
- Students with Double Majors: Fall 2013 Undergraduate Headcount Enrollment
- Majors with Greatest Student Enrollment: Fall 2013
- Number of Majors, Programs and Degrees Offered

## ***Student Data Definitions:***

---

Admission statistics - Number of students who applied for admission, were admitted, and enrolled each fall quarter

Degrees awarded - Number of students receiving degrees awarded in each year. Students earning multiple degrees in one year are counted according to the number of degrees earned. Students with more than one major are counted only once.

Graduation rates - Number and percent of students in cohort who graduated. Students are counted in each major according to the last major in which they enrolled (or graduated) because of the possibility that students can change majors many times over the course of 4, 5, or 6 years. Each cohort consists of first-time, full-time, degree-seeking freshmen.

New First-Year student - New freshman as defined by the Office of Admissions

State and County of Residence - Students' home address at the time of their application for admission

Student FTE - Number of credit hours taken by students divided by 15

Student headcount - Number of students enrolled for credit in a given quarter. Campus, college, and major are attributed to the student from data in the Student Information System. Students may be counted more than once if they are enrolled at more than one campus, but within each campus students with more than one college or major are counted only once.

Student retention - Percent of students entering each fall quarter as degree-seeking first-year students who return as second-year students. Students are counted in each major according to the last major in which they enrolled because of the possibility that students can change majors after first enrolling. Each cohort consists of first-time, full-time, degree-seeking freshmen.

Transfer-out rates - Number and percent of students in a freshman cohort who did not graduate from Ohio University, but subsequently enrolled at another college or university.



**Ohio University  
Student Headcount by Campus  
Fall 2013**

	<u>Undergraduate</u>	<u>Master's</u>	<u>Doctoral</u>	<u>Total</u>
<b>Athens Campus</b>	17,375	3,754	989	22,118
<b>Osteopathic Medicine</b>	0	0	539	539
<b>Athens Total</b>	17,375	3,754	1,528	22,657
<b>eLearning</b>	6,129	0	0	6,129
<b>Chillicothe</b>	2,330	0	0	2,330
<b>Eastern</b>	1,091	0	0	1,091
<b>Lancaster</b>	2,596	0	0	2,596
<b>Southern</b>	2,012	0	0	2,012
<b>Zanesville</b>	2,042	0	0	2,042
<b>Regional Higher Education Total</b>	10,071	0	0	10,071
<b>Grand Total</b>	33,575	3,754	1,528	38,857

Web Link for further information: <http://www.ohio.edu/institres/enrollstats/index.html>

**Ohio University  
Student Headcount  
Fall 2007 - Fall 2013**

	2007	2008	2009	2010	2011	2012	2013	<b>% Change</b>	
								07-13	12-13
<b>Athens Campus</b>									
Undergraduate	16,644	16,738	17,124	17,212	17,302	17,007	17,375	4.4%	2.2%
Master's	2,455	2,483	2,700	2,737	3,167	3,255	3,754	52.9%	15.3%
Doctoral	814	870	895	908	887	949	989	21.5%	4.2%
<b>eLearning</b>									
Undergraduate	739	832	1,465	3,784	4,353	5,678	6,129	729.4%	7.9%
<b>Osteopathic Medicine</b>	437	446	463	467	492	513	539	23.3%	5.1%
<b>Regional Higher Ed</b>									
Undergraduate	7,819	8,344	9,712	10,216	9,925	10,050	10,071	28.8%	0.2%

Web Link for further information: <http://www.ohio.edu/institres/student/quartenroll/index.html>

14 Students

**Ohio University Athens Campus  
Fall Quarter Student Headcount by College**

	2007	2008	2009	2010	2011	2012	2013	% Change	
								07-13	12-13
<b>Arts &amp; Sciences</b>									
Undergraduate	4,125	4,068	4,210	4,172	4,208	4,001	4,083	-1.0%	2.0%
Graduate	808	898	892	846	756	726	768	-5.0%	5.8%
Total	4,933	4,966	5,102	5,018	4,964	4,727	4,851	-1.7%	2.6%
<b>Business*</b>									
Undergraduate	1,843	1,944	2,028	2,403	2,262	2,272	2,274	23.4%	0.1%
Graduate	337	324	260	253	353	487	616	82.8%	26.5%
Total	2,180	2,268	2,288	2,656	2,615	2,759	2,890	32.6%	4.7%
<b>Communication</b>									
Undergraduate	2,349	2,479	2,509	2,450	2,323	2,256	2,136	-9.1%	-5.3%
Graduate	202	207	215	234	248	235	259	28.2%	10.2%
Total	2,551	2,686	2,724	2,684	2,571	2,491	2,395	-6.1%	-3.9%
<b>Education*</b>									
Undergraduate	1,263	1,187	1,220	1,888	1,800	1,682	1,586	25.6%	-5.7%
Graduate	679	710	796	802	897	930	893	31.5%	-4.0%
Total	1,942	1,897	2,016	2,690	2,697	2,612	2,479	27.7%	-5.1%
<b>Engineering/Technology</b>									
Undergraduate	1,239	1,249	1,288	1,332	1,406	1,508	1,591	28.4%	5.5%
Graduate	312	288	302	313	327	390	431	38.1%	10.5%
Total	1,551	1,537	1,590	1,645	1,733	1,898	2,022	30.4%	6.5%
<b>Fine Arts*</b>									
Undergraduate	813	810	836	869	830	774	748	-8.0%	-3.4%
Graduate	238	232	247	254	245	236	264	10.9%	11.9%
Total	1,051	1,042	1,083	1,123	1,075	1,010	1,012	-3.7%	0.2%
<b>Health Sci &amp; Professions*</b>									
Undergraduate	2,720	2,718	2,878	1,917	2,203	2,402	2,538	-6.7%	5.7%
Graduate	383	423	622	659	833	968	1,154	201.3%	19.2%
Total	3,103	3,141	3,500	2,576	3,036	3,370	3,692	19.0%	9.6%
<b>University College</b>									
Undergraduate	2,194	2,179	2,052	2,065	2,094	1,951	2,222	1.3%	13.9%
<b>Honors Tutorial**</b>									
Undergraduate	211	216	216	219	223	217	203	-3.8%	-6.5%
<b>Voinovich</b>									
Undergraduate	—	—	—	0	0	1	2	—	100.0%
Graduate	—	—	—	34	62	87	83	—	-4.6%
Total	—	—	—	34	62	88	85	—	-3.4%
<b>International Studies</b>									
Undergraduate	82	90	86	94	116	79	93	13.4%	17.7%
Graduate	134	149	129	114	113	94	120	-10.4%	27.7%
Total	216	239	215	208	229	173	213	-1.4%	23.1%

\*Data beginning 2010-11 reflect academic restructuring of academic programs and colleges; prior years' data reflect old structures.

\*\*Students enrolled in Honors Tutorial College are also included in their host college.

Web Link for further information: <http://www.ohio.edu/instres/compendium/index.html>

**Ohio University  
Student FTE by Campus  
Fall 2013**

	<u>Undergraduate</u>	<u>Graduate</u>	<u>Total</u>
<b>Athens Campus</b>	17,169	2,930	20,099
<b>Osteopathic Medicine</b>	0	539	539
<b>Athens Total</b>	17,169	3,469	20,638
<b>eLearning</b>	3,062	0	3,062
<b>Chillicothe</b>	1,491	0	1,491
<b>Eastern</b>	617	0	617
<b>Lancaster</b>	1,633	0	1,633
<b>Southern</b>	1,314	0	1,314
<b>Zanesville</b>	1,205	0	1,205
<b>Regional Higher Education Total</b>	6,260	0	6,260
<b>Grand Total</b>	26,491	3,469	29,960

Web Link for further information: <http://www.ohio.edu/institres/student/quartenroll/index.html>

**Ohio University  
Student FTE  
Fall 2007 - Fall 2013**

	2007	2008	2009	2010	2011	2012	2013	% Change	
								07-13	12-13
<b>Athens Campus</b>									
Undergraduate	17,584	17,795	18,089	18,145	18,168	16,596	17,169	-2.4%	3.5%
Master's	2,043	2,035	2,044	2,053	2,257	2,027	2,219	8.6%	9.5%
Doctoral	629	663	689	706	682	697	711	13.0%	2.0%
<b>eLearning</b>									
Undergraduate	321	360	610	1,920	2,259	3,183	3,062	853.9%	-3.8%
<b>Osteopathic Medicine</b>	437	446	463	467	492	513	539	23.3%	5.1%
<b>Regional Higher Ed</b>									
Undergraduate	5,740	6,143	7,118	7,458	7,115	6,516	6,260	9.1%	-3.9%

Web Link for further information: <http://www.ohio.edu/institres/student/quartenroll/index.html>

16 Students

**Ohio University Athens Campus  
Fall Quarter Student FTE by College**

	2007	2008	2009	2010	2011	2012	2013	% Change	
								07-13	12-13
<b>Arts &amp; Sciences</b>									
Undergraduate	4,373	4,315	4,436	4,384	4,422	3,929	4,093	-6.4%	4.2%
Graduate	681	725	742	706	624	587	616	-9.5%	4.9%
Total	5,054	5,040	5,178	5,090	5,046	4,516	4,709	-6.8%	4.3%
<b>Business*</b>									
Undergraduate	2,028	2,175	2,247	2,631	2,499	2,292	2,323	14.5%	1.4%
Graduate	372	349	201	198	243	224	273	-26.6%	21.9%
Total	2,400	2,524	2,448	2,829	2,742	2,516	2,596	8.2%	3.2%
<b>Communication</b>									
Undergraduate	2,533	2,672	2,691	2,611	2,462	2,201	2,125	-16.1%	-3.5%
Graduate	158	170	162	176	187	165	173	9.5%	4.8%
Total	2,691	2,842	2,853	2,787	2,649	2,366	2,298	-14.6%	-2.9%
<b>Education*</b>									
Undergraduate	1,358	1,279	1,312	1,998	1,899	1,640	1,557	14.7%	-5.1%
Graduate	452	447	511	534	592	524	486	7.5%	-7.3%
Total	1,810	1,726	1,823	2,532	2,491	2,164	2,043	12.9%	-5.6%
<b>Engineering/Technology</b>									
Undergraduate	1,273	1,304	1,357	1,408	1,497	1,510	1,612	26.6%	6.8%
Graduate	234	214	218	232	249	261	274	17.1%	5.0%
Total	1,507	1,518	1,575	1,640	1,746	1,771	1,886	25.1%	6.5%
<b>Fine Arts*</b>									
Undergraduate	876	887	918	958	917	780	787	-10.2%	0.9%
Graduate	252	238	259	269	259	249	268	6.3%	7.6%
Total	1,128	1,125	1,177	1,227	1,176	1,029	1,055	-6.5%	2.5%
<b>Health Sci &amp; Professions*</b>									
Undergraduate	2,843	2,856	2,990	1,981	2,257	2,321	2,448	-13.9%	5.5%
Graduate	329	352	463	462	545	533	619	88.1%	16.1%
Total	3,172	3,208	3,453	2,443	2,802	2,854	3,067	-3.3%	7.5%
<b>University College</b>									
Undergraduate	2,197	2,203	2,042	2,066	2,077	1,818	2,098	-4.5%	15.4%
<b>Honors Tutorial College**</b>									
Undergraduate	238	242	243	254	258	235	226	-5.0%	-3.8%
<b>Voinovich</b>									
Undergraduate	—	—	—	0	0	1	2	—	100.0%
Graduate	—	—	—	30	52	60	59	—	-1.7%
Total	—	—	—	30	52	61	61	—	0.0%
<b>International Studies</b>									
Undergraduate	89	94	86	97	112	79	89	0.0%	12.7%
Graduate	138	150	125	111	110	90	119	-13.8%	32.2%
Total	227	244	211	208	222	169	208	-8.4%	23.1%

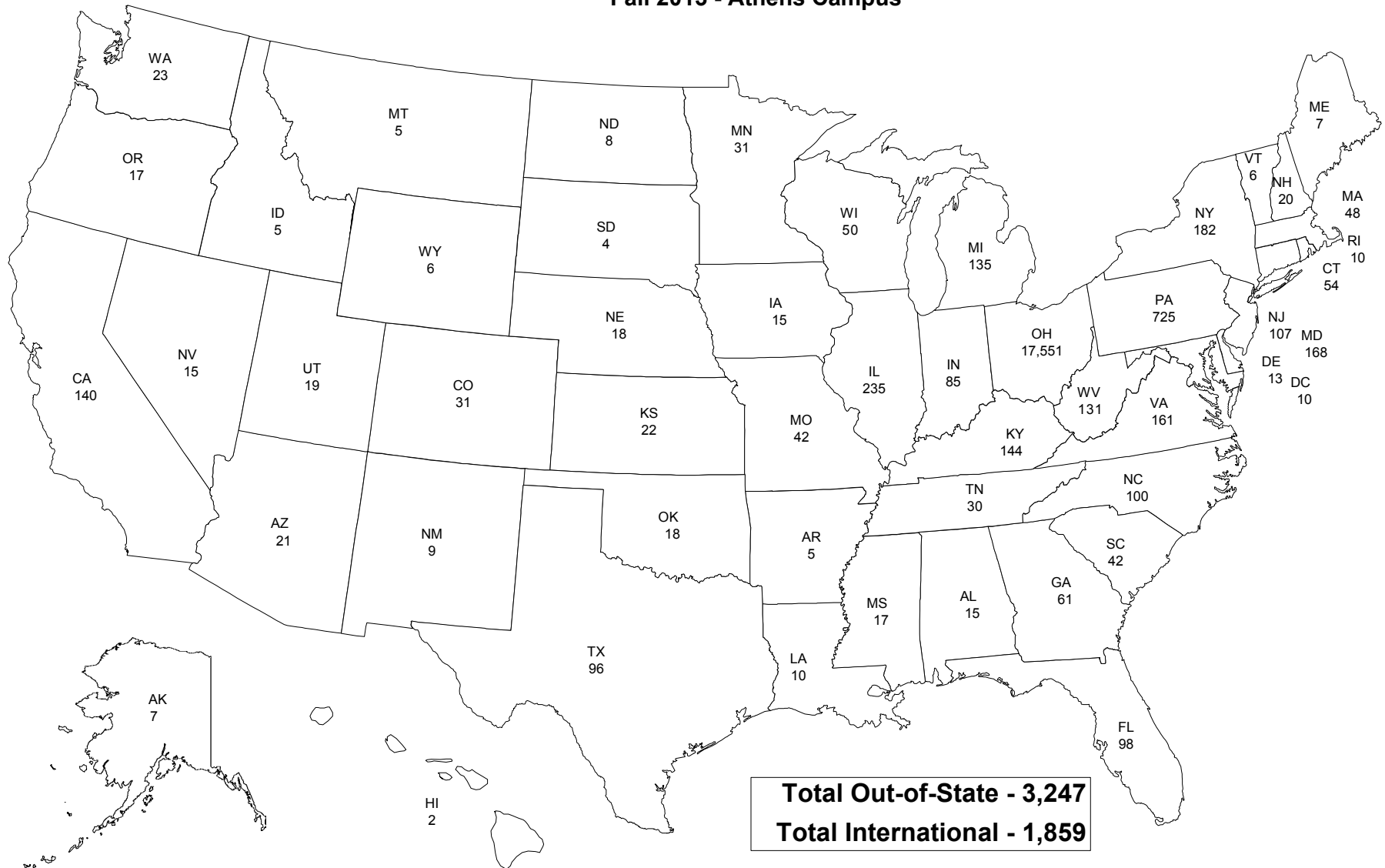
\*Data beginning 2010-11 reflect academic restructuring of academic programs and colleges; prior years' data reflect old structures.

\*\*Students enrolled in Honors Tutorial College are also included in their host college.

Web Link for further information: <http://www.ohio.edu/instres/compendium/index.html>

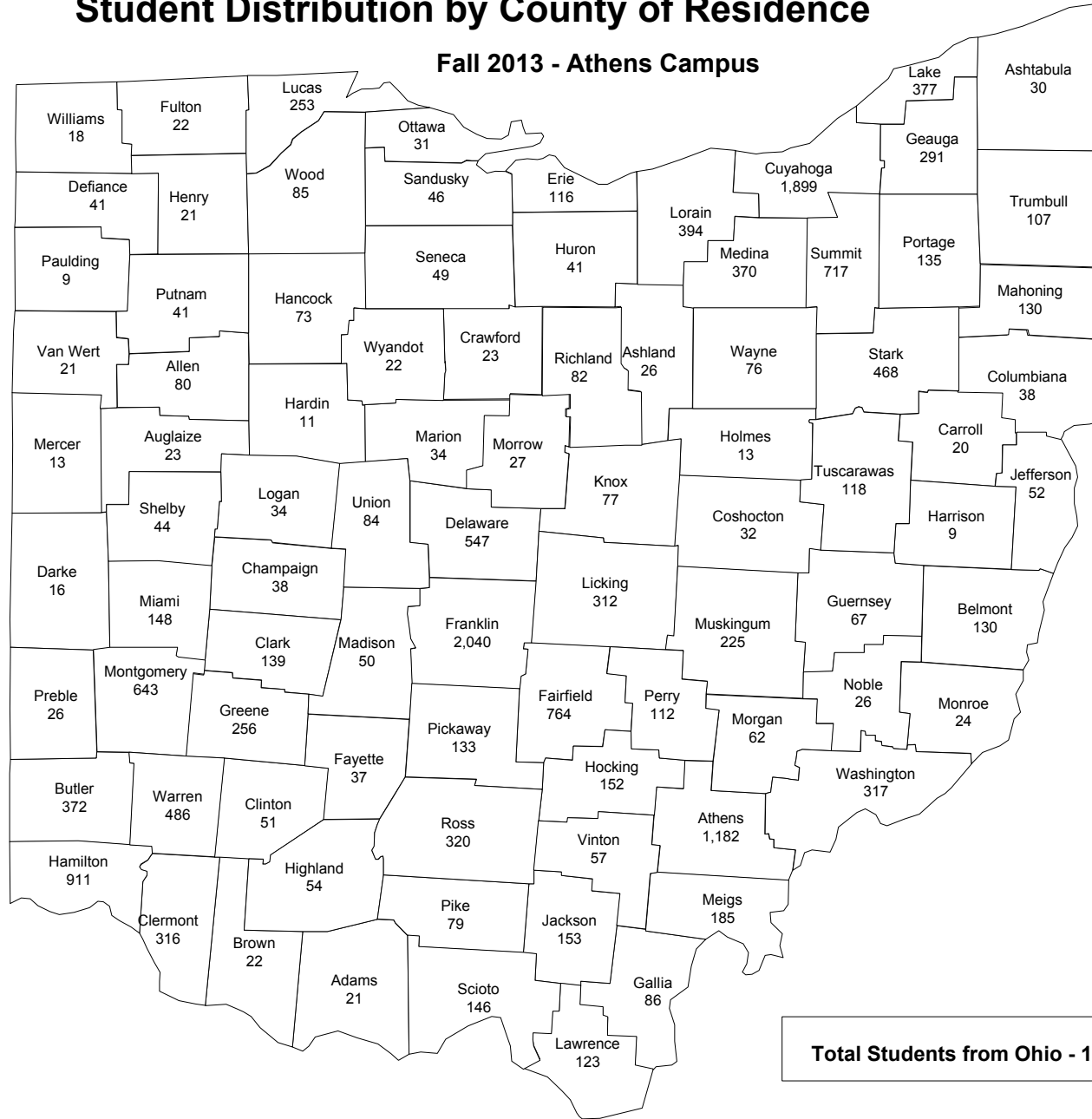
# Student Distribution by State of Residence

## Fall 2013 - Athens Campus



# Student Distribution by County of Residence

Fall 2013 - Athens Campus



**Total Students from Ohio - 17,551**

**Ohio University  
Degrees Awarded by Campus  
2012 - 2013**

	<u>Associate's</u>	<u>Bachelor's</u>	<u>Master's</u>	<u>Doctoral</u>	<u>D.O.</u>	<u>Total</u>
<b>Athens Campus</b>	140	6,070	1,252	160	113	7,735
<b>Chillicothe</b>	206	—	—	—	—	206
<b>Eastern</b>	21	—	—	—	—	21
<b>Lancaster</b>	107	—	—	—	—	107
<b>Southern</b>	177	—	—	—	—	177
<b>Zanesville</b>	123	—	—	—	—	123
<b>Grand Total</b>	774	6,070	1,252	160	113	8,369

Web Link for further information: <http://www.ohio.edu/institres/student/degrees.html>

**Ohio University  
Degrees Awarded  
2006-07 - 2012-13**

	2006-07	2007-08	2008-09	2009-10	2010-11	2011-12	2012-13	% Change	
								07-13	12-13
<b>Athens Campus</b>									
Associate's	58	52	44	80	68	115	140	141.4%	21.7%
Bachelor's	3,970	4,025	3,918	4,046	4,630	5,465	6,070	52.9%	11.1%
Master's	894	956	886	1,202	1,023	1,187	1,252	40.0%	5.5%
Doctoral	162	147	166	166	158	133	160	-1.2%	20.3%
<b>Osteopathic Medicine</b>	104	106	103	110	109	113	113	8.7%	0.0%
<b>Regional Higher Ed</b>									
Associate's	494	554	576	540	620	632	634	28.3%	0.3%

Web Link for further information: <http://www.ohio.edu/institres/student/degrees.html>

20 Students

Ohio University Athens Campus  
Degrees Awarded by College

	2006-07	2007-08	2008-09	2009-10	2010-11	2011-12	2012-13	% Change	
								07-13	12-13
<b>Arts &amp; Sciences</b>									
Bachelor's	960	880	855	876	920	909	902	-6.0%	-0.8%
Graduate	318	288	294	317	319	249	231	-27.4%	-7.2%
Total	1,278	1,168	1,149	1,193	1,239	1,158	1,133	-11.3%	-2.2%
<b>Business*</b>									
Bachelor's	441	507	470	514	709	689	557	26.3%	-19.2%
Graduate	88	78	77	233	124	163	201	128.4%	23.3%
Total	529	585	547	747	833	852	758	43.3%	-11.0%
<b>Communication</b>									
Bachelor's	581	658	698	672	791	698	802	38.0%	14.9%
Graduate	87	71	91	88	67	81	89	2.3%	9.9%
Total	668	729	789	760	858	779	891	33.4%	14.4%
<b>Education*</b>									
Bachelor's	471	441	389	364	537	570	564	19.7%	-1.1%
Graduate	210	268	190	305	248	309	311	48.1%	0.6%
Total	681	709	579	669	785	879	875	28.5%	-0.5%
<b>Engineering/Technology</b>									
Associate's/Bachelor's	239	234	220	236	229	255	223	-6.7%	-12.5%
Graduate	78	78	77	63	83	68	76	-2.6%	11.8%
Total	317	312	297	299	312	323	299	-5.7%	-7.4%
<b>Fine Arts*</b>									
Bachelor's	132	144	138	139	161	159	149	12.9%	-6.3%
Graduate	77	70	75	60	67	74	76	-1.3%	2.7%
Total	209	214	213	199	228	233	225	7.7%	-3.4%
<b>Health Sci &amp; Professions*</b>									
Associate's/Bachelor's	795	835	811	885	905	1,744	2,329	193.0%	33.5%
Graduate	144	182	180	224	195	294	344	138.9%	17.0%
Total	939	1,017	991	1,109	1,100	2,038	2,673	184.7%	31.2%
<b>University College/RHE</b>									
Associate's	535	595	608	605	675	736	754	40.9%	2.4%
Bachelor's	354	321	330	355	373	425	496	40.1%	16.7%
Total	889	916	938	960	1,048	1,161	1,250	40.6%	7.7%
<b>Honors Tutorial College**</b>									
Bachelor's	40	38	57	51	51	44	43	7.5%	-2.3%
<b>Voinovich</b>									
Graduate	—	—	—	—	22	30	36	—	20.0%
<b>International Studies</b>									
Bachelor's	14	16	19	20	18	27	25	78.6%	-7.4%
Graduate	54	68	68	78	56	52	48	-11.1%	-7.7%
Total	68	84	87	98	74	79	73	7.4%	-7.6%

\*Data beginning 2010-11 reflect academic restructuring of academic programs and colleges; prior years' data reflect old structures.

\*\*Students in Honors Tutorial College are also included in their host college.

Web Link for further information: <http://www.ohio.edu/instres/compendium/index.html>



## Ohio University Admission Statistics by Campus Fall 2013

	New First-Year			Graduate		
	Applied	Admitted	Enrolled	Applied	Admitted	Enrolled
<b>Athens Campus</b>	20,765	15,149	4,244	4,598	2,060	1,349
<b>Chillicothe</b>	751	665	384	—	—	—
<b>Eastern</b>	245	222	121	—	—	—
<b>Lancaster</b>	669	619	469	—	—	—
<b>Southern</b>	658	528	279	—	—	—
<b>Zanesville</b>	600	548	302	—	—	—
<b>Regional Higher Education Total</b>	2,923	2,582	1,555	—	—	—

Web Link for further information: <http://www.ohio.edu/instres/student/admstats/index.html>

## Ohio University Admission Statistics Fall 2007 - Fall 2013

	2007	2008	2009	2010	2011	2012	2013	% Change	
								07-13	12-13
<b>Athens Campus</b>									
<b>New First-Year</b>									
Applied	13,020	14,046	14,204	13,366	13,392	17,466	20,765	59.5%	18.9%
Admitted	10,679	10,931	11,591	11,372	11,436	13,571	15,149	41.9%	11.6%
Enrolled	4,006	3,985	4,072	3,976	3,883	3,888	4,244	5.9%	9.2%
<b>Graduate</b>									
Applied	3,650	3,937	3,776	4,115	3,978	4,348	4,598	26.0%	5.7%
Admitted	1,737	1,724	1,772	1,908	1,730	1,929	2,060	18.6%	6.8%
Enrolled	891	978	976	1,058	1,087	1,295	1,349	51.4%	4.2%
<b>Regional Higher Ed.</b>									
<b>New First-Year</b>									
Applied	2,580	2,806	3,327	3,087	2,869	2,727	2,923	13.3%	7.2%
Admitted	2,462	2,714	3,227	2,991	2,464	2,355	2,582	4.9%	9.6%
Enrolled	1,305	1,503	1,808	1,653	1,432	1,472	1,555	19.2%	5.6%

Web Link for further information: <http://www.ohio.edu/instres/student/admstats/index.html>

22 Students

**Ohio University Athens Campus  
New First-Year Undergraduate Admission Statistics by College**

	2007	2008	2009	2010	2011	2012	2013	% Change	
								07-13	12-13
<b>Arts &amp; Sciences</b>									
Applied	3,393	3,700	3,789	3,527	3,443	5,367	6,403	88.7%	19.3%
Admitted	2,843	2,914	3,167	3,073	2,956	4,088	4,650	63.6%	13.7%
Enrolled	949	864	1,014	900	882	890	999	5.3%	12.2%
<b>Business*</b>									
Applied	1,622	1,903	1,666	1,442	1,493	1,893	2,453	51.2%	29.6%
Admitted	1,202	1,341	1,394	1,291	1,241	1,495	1,663	38.4%	11.2%
Enrolled	388	398	365	354	349	376	397	2.3%	5.6%
<b>Communication</b>									
Applied	1,162	1,298	1,133	1,010	1,030	1,190	1,231	5.9%	3.4%
Admitted	981	1,034	995	945	945	1,043	1,021	4.1%	-2.1%
Enrolled	563	567	524	515	480	482	432	-23.3%	-10.4%
<b>Education*</b>									
Applied	935	990	984	1,133	966	1,017	1,135	21.4%	11.6%
Admitted	702	713	780	945	837	783	824	17.4%	5.2%
Enrolled	235	234	270	362	246	245	259	10.2%	5.7%
<b>Engineering/Technology</b>									
Applied	879	1,087	1,117	990	1,058	1,676	2,133	142.7%	27.3%
Admitted	764	866	945	907	969	1,393	1,668	118.3%	19.7%
Enrolled	258	291	272	288	305	350	394	52.7%	12.6%
<b>Fine Arts*</b>									
Applied	612	644	686	635	556	634	664	8.5%	4.7%
Admitted	491	528	586	540	456	461	465	-5.3%	0.9%
Enrolled	190	210	218	201	196	174	185	-2.6%	6.3%
<b>Health Sci &amp; Professions*</b>									
Applied	1,242	1,345	1,714	1,504	1,680	2,033	2,593	108.8%	27.5%
Admitted	1,006	998	1,315	1,252	1,425	1,556	1,835	82.4%	17.9%
Enrolled	407	410	525	415	428	449	513	26.0%	14.3%
<b>University College</b>									
Applied	3,121	3,022	3,068	3,091	3,134	3,599	4,078	30.7%	13.3%
Admitted	2,641	2,496	2,366	2,385	2,580	2,705	2,965	12.3%	9.6%
Enrolled	1,001	988	872	923	982	910	1,046	4.5%	14.9%
<b>Honors Tutorial College**</b>									
Applied	212	211	208	233	219	261	230	8.5%	-11.9%
Admitted	92	86	103	108	94	101	88	-4.3%	-12.9%
Enrolled	49	47	50	66	60	53	43	-12.2%	-18.9%
<b>International Studies</b>									
Applied	54	57	47	34	32	56	73	35.2%	30.4%
Admitted	49	41	43	34	27	46	57	16.3%	23.9%
Enrolled	15	23	12	18	15	11	18	20.0%	63.6%
<b>Voinovich</b>									
Applied	—	—	—	—	—	1	2	—	100.0%
Admitted	—	—	—	—	—	1	1	—	0.0%
Enrolled	—	—	—	—	—	1	1	—	0.0%

\*Data beginning 2010-11 reflect academic restructuring of academic programs and colleges; prior years' data reflect old structures.

\*\*Students in Honors Tutorial College are also included in their host college.

Web Link for further information: <http://www.ohio.edu/instres/student/admstats/index.html>

## Ohio University Athens Campus Graduate Student Admission Statistics by College

	2007	2008	2009	2010	2011	2012	2013	% Change	
								07-13	12-13
<b>Arts &amp; Sciences</b>									
Applied	1,243	1,340	1,237	1,294	1,253	1,269	1,344	8.1%	5.9%
Admitted	434	451	430	412	334	351	409	-5.8%	16.5%
Enrolled	211	261	245	237	193	215	241	14.2%	12.1%
<b>Business*</b>									
Applied	106	159	139	193	206	350	445	319.8%	27.1%
Admitted	56	67	76	107	116	230	306	446.4%	33.0%
Enrolled	36	47	45	55	100	186	216	500.0%	16.1%
<b>Communication</b>									
Applied	285	308	314	360	319	315	299	4.9%	-5.1%
Admitted	134	153	156	178	155	148	149	11.2%	0.7%
Enrolled	65	95	93	99	98	100	96	47.7%	-4.0%
<b>Education*</b>									
Applied	483	472	469	570	480	562	551	14.1%	-2.0%
Admitted	358	312	327	408	350	393	345	-3.6%	-12.2%
Enrolled	211	212	195	264	248	269	216	2.4%	-19.7%
<b>Engineering/Technology</b>									
Applied	417	439	374	355	424	351	460	10.3%	31.1%
Admitted	260	234	219	190	174	183	208	-20.0%	13.7%
Enrolled	77	67	58	62	75	94	114	48.1%	21.3%
<b>Fine Arts*</b>									
Applied	475	451	430	465	419	432	431	-9.3%	-0.2%
Admitted	128	142	157	126	114	126	136	6.3%	7.9%
Enrolled	84	78	97	89	72	87	97	15.5%	11.5%
<b>Health Sci &amp; Professions*</b>									
Applied	324	402	510	465	509	739	771	138.0%	4.3%
Admitted	157	147	211	200	252	296	305	94.3%	3.0%
Enrolled	110	98	158	149	189	238	250	127.3%	5.0%
<b>International Studies</b>									
Applied	244	277	226	239	196	213	197	-19.3%	-7.5%
Admitted	154	141	136	145	105	110	129	-16.2%	17.3%
Enrolled	65	73	48	58	50	41	68	4.6%	65.9%
<b>Voinovich</b>									
Applied	—	—	—	68	67	78	72	—	-7.7%
Admitted	—	—	—	57	51	56	47	—	-16.1%
Enrolled	—	—	—	14	32	31	28	—	-9.7%

\*Data beginning 2010-11 reflect academic restructuring of academic programs and colleges; prior years' data reflect old structures.

Web Link for further information: <http://www.ohio.edu/instres/student/admstats/index.html>

## Ohio University

### First-Year Student Retention by Campus and College\* 2006 to 2007 - 2012 to 2013

	2006 to 2007	2007 to 2008	2008 to 2009	2009 to 2010	2010 to 2011	2011 to 2012	2012 to 2013	% Change	
								07-13	12-13
<b>Athens Campus</b>									
<b>Arts &amp; Sciences</b>	75%	75%	78%	78%	76%	77%	77%	2%	0%
<b>Business</b>	87%	89%	86%	89%	86%	87%	85%	-2%	-2%
<b>Communication</b>	88%	91%	91%	91%	89%	88%	88%	0%	0%
<b>Education</b>	82%	83%	87%	83%	84%	84%	83%	1%	-1%
<b>Engineering &amp; Technology</b>	81%	79%	83%	84%	86%	81%	79%	-2%	-2%
<b>Fine Arts</b>	80%	80%	80%	81%	77%	80%	85%	5%	5%
<b>Health Sci &amp; Professions</b>	83%	82%	82%	83%	84%	80%	77%	-6%	-3%
<b>University College</b>	63%	71%	71%	70%	66%	63%	66%	3%	3%
<b>Honors Tutorial College</b>	92%	96%	98%	98%	94%	97%	98%	6%	1%
<b>International Studies</b>	84%	83%	88%	79%	84%	82%	89%	5%	7%
<b>Athens Total</b>	78%	80%	82%	81%	80%	79%	79%	1%	0%
<b>Chillicothe</b>	62%	60%	53%	54%	43%	51%	51%	-11%	0%
<b>Eastern</b>	59%	50%	63%	60%	57%	66%	63%	4%	-3%
<b>Lancaster</b>	55%	51%	61%	62%	56%	61%	61%	6%	0%
<b>Southern</b>	50%	54%	52%	41%	48%	56%	52%	2%	-4%
<b>Zanesville</b>	60%	64%	60%	51%	55%	64%	51%	-9%	-13%
<b>Regional Higher Ed. Total</b>	57%	55%	57%	55%	52%	60%	56%	-1%	-4%

\*Last program in which student was enrolled.

Web Link for further information: <http://www.ohio.edu/instres/retention/index.html>

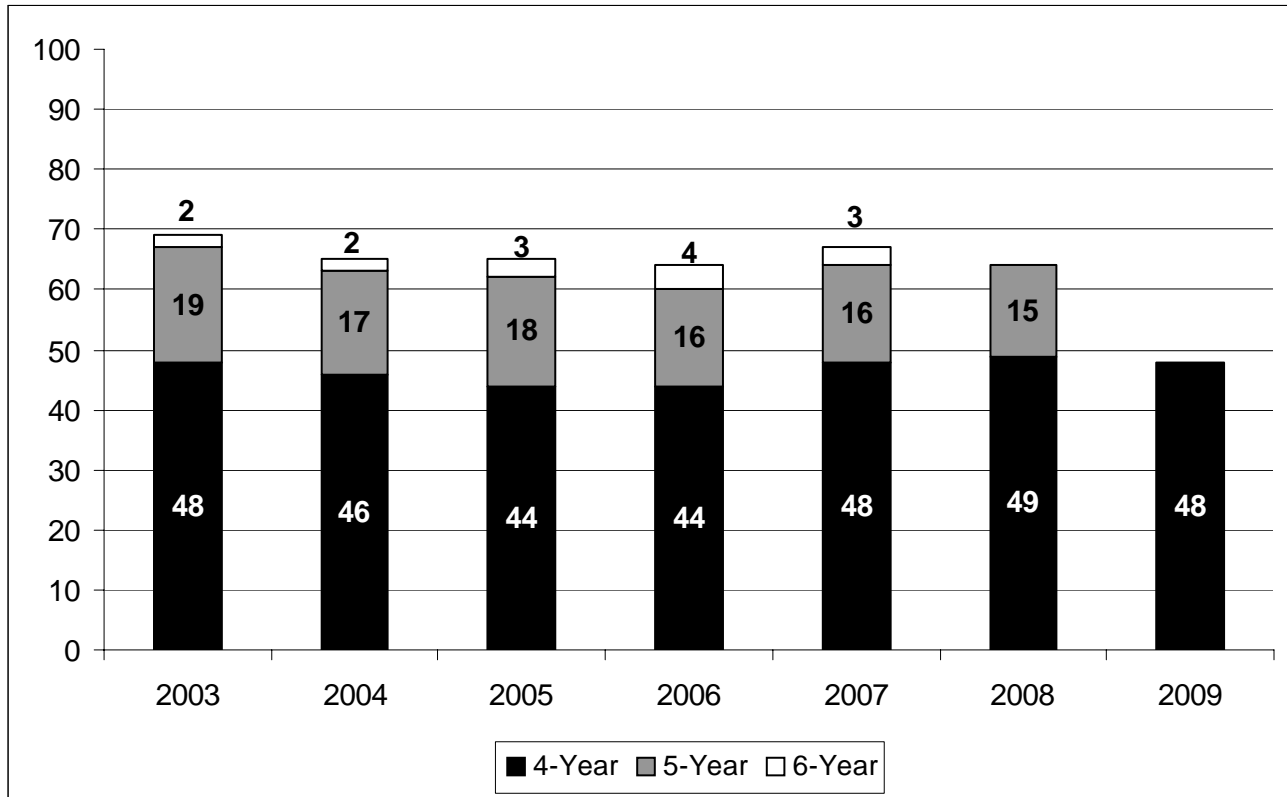
**Ohio University**  
**Graduation and Transfer-Out Rates by Campus**  
**2007 Freshman Cohort\***

	2007 Freshman Cohort	Graduated					Total Graduated	Transferred Out	Graduated & Transferred Out
		After 2-Yrs	After 3-Yrs	After 4-Yrs	After 5-Yrs	After 6-Yrs			
<b>Athens Campus</b>	3,976								
Bachelor's		1	23	1,878	629	104	2,635	—	—
Associate's		0	3	0	1	4	8	—	—
Total		1	26	1,878	630	108	2,643	1,052	3,695
Percent		0.0%	0.7%	47.2%	15.8%	2.7%	66.5%	26.5%	92.9%
<b>Chillicothe</b>	243								
Bachelor's		0	0	7	17	6	30	—	—
Associate's		0	6	13	7	5	31	—	—
Total		0	6	20	24	11	61	83	144
Percent		0.0%	2.5%	8.2%	9.9%	4.5%	25.1%	34.2%	59.3%
<b>Eastern</b>	129								
Bachelor's		0	0	8	15	9	32	—	—
Associate's		0	0	1	0	0	1	—	—
Total		0	0	9	15	9	33	65	98
Percent		0.0%	0.0%	7.0%	11.6%	7.0%	25.6%	50.4%	76.0%
<b>Lancaster</b>	317								
Bachelor's		0	0	21	29	13	63	—	—
Associate's		3	14	2	3	1	23	—	—
Total		3	14	23	32	14	86	130	216
Percent		0.9%	4.4%	7.3%	10.1%	4.4%	27.1%	41.0%	68.1%
<b>Southern</b>	227								
Bachelor's		0	2	13	12	4	31	—	—
Associate's		1	14	2	4	2	23	—	—
Total		1	16	15	16	6	54	53	107
Percent		0.4%	7.0%	6.6%	7.0%	2.6%	23.8%	23.3%	47.1%
<b>Zanesville</b>	263								
Bachelor's		0	4	37	27	16	84	—	—
Associate's		1	10	3	1	3	18	—	—
Total		1	14	40	28	19	102	108	210
Percent		0.4%	5.3%	15.2%	10.6%	7.2%	38.8%	41.1%	79.8%

\*First-time, full-time degree-seeking students.

Web Link for further information: <http://www.ohio.edu/institres/student/gradrates.html>

## Ohio University Athens Campus Cumulative Graduation Rates 2003 - 2009 Freshman Cohorts



### Cohort Entering Fall Quarter

	2003	2004	2005	2006	2007	2008	2009
No. of Students in Cohort	3,571	3,734	4,078	4,009	3,970	3,910	3,961
4-Yr Graduation Rate	48%	46%	44%	44%	48%	49%	48%
5-Yr Graduation Rate	67%	63%	62%	60%	64%	64%	—
6-Yr Graduation Rate	69%	65%	65%	64%	67%	—	—

## Ohio University Athens Campus Cumulative Graduation Rates by College\*

	Cohort Entering Fall Quarter						
	2003	2004	2005	2006	2007	2008	2009
<b>Arts &amp; Sciences</b>							
No. of Students in Cohort	968	972	1,025	1,011	1,002	909	1,002
4-Yr Graduation Rate	46%	40%	40%	39%	41%	45%	44%
5-Yr Graduation Rate	61%	55%	56%	52%	56%	59%	—
6-Yr Graduation Rate	63%	58%	59%	56%	59%	—	—
<b>Business</b>							
No. of Students in Cohort	426	451	518	573	694	618	515
4-Yr Graduation Rate	65%	68%	65%	59%	64%	61%	60%
5-Yr Graduation Rate	82%	80%	82%	77%	81%	74%	—
6-Yr Graduation Rate	84%	81%	83%	78%	82%	—	—
<b>Communication</b>							
No. of Students in Cohort	521	585	668	654	676	647	608
4-Yr Graduation Rate	70%	73%	69%	68%	72%	73%	77%
5-Yr Graduation Rate	82%	86%	82%	81%	83%	81%	—
6-Yr Graduation Rate	83%	88%	84%	82%	85%	—	—
<b>Education</b>							
No. of Students in Cohort	302	319	293	432	397	417	397
4-Yr Graduation Rate	46%	40%	37%	43%	40%	51%	52%
5-Yr Graduation Rate	70%	61%	63%	66%	64%	69%	—
6-Yr Graduation Rate	74%	63%	69%	70%	68%	—	—
<b>Engineering &amp; Technology</b>							
No. of Students in Cohort	243	238	252	254	250	279	256
4-Yr Graduation Rate	27%	23%	25%	28%	27%	37%	26%
5-Yr Graduation Rate	67%	57%	63%	57%	56%	61%	—
6-Yr Graduation Rate	72%	63%	68%	64%	61%	—	—
<b>Fine Arts</b>							
No. of Students in Cohort	134	148	176	202	179	206	211
4-Yr Graduation Rate	40%	40%	39%	41%	42%	40%	41%
5-Yr Graduation Rate	61%	59%	55%	58%	59%	55%	—
6-Yr Graduation Rate	63%	61%	60%	61%	63%	—	—
<b>Health Sci &amp; Professions</b>							
No. of Students in Cohort	643	686	720	431	426	454	494
4-Yr Graduation Rate	51%	46%	44%	50%	51%	46%	55%
5-Yr Graduation Rate	75%	67%	66%	68%	67%	70%	—
6-Yr Graduation Rate	78%	72%	70%	73%	71%	—	—
<b>University College</b>							
No. of Students in Cohort	334	312	403	436	328	358	454
4-Yr Graduation Rate	15%	8%	6%	7%	10%	11%	9%
5-Yr Graduation Rate	23%	18%	17%	15%	16%	21%	—
6-Yr Graduation Rate	27%	21%	19%	19%	20%	—	—
<b>Honors Tutorial College**</b>							
No. of Students in Cohort	49	48	52	53	34	44	41
4-Yr Graduation Rate	67%	67%	83%	77%	67%	77%	78%
5-Yr Graduation Rate	86%	79%	90%	87%	77%	84%	—
6-Yr Graduation Rate	86%	81%	90%	92%	79%	—	—

\*Last program in which student was enrolled.

\*\*Data beginning 2006 reflect academic restructuring of academic programs and colleges; prior years' data reflect old structures.

\*\*\*Students enrolled in Honors Tutorial College are also included in their host college.

Web Link for further information: <http://www.ohio.edu/instres/compendium/index.html>

**Ohio University Athens Campus  
Student Enrollment by Race/Ethnicity and Gender  
Fall 2007 - Fall 2013**

	2007		2008		2009		2010		2011		2012		2013	
	Number Enrolled	% of Total	Number Enrolled	% of Total	Number Enrolled	% of Total	Number Enrolled	% of Total	Number Enrolled	% of Total	Number Enrolled	% of Total	Number Enrolled	% of Total
<b>African American</b>	923	4.5%	1,004	4.9%	1,061	5.0%	958	4.5%	1,029	4.7%	1,035	4.8%	1,037	4.6%
<b>Asian American</b>	224	1.1%	234	1.1%	270	1.3%	212	1.0%	209	1.0%	244	1.1%	290	1.3%
<b>Foreign/ Non-Resident Alien</b>	1,221	6.0%	1,420	6.9%	1,437	6.8%	1,491	7.0%	1,607	7.4%	1,745	8.0%	1,859	8.2%
<b>Hawaiian/Pacific Is</b>	—	—	—	—	—	—	24	0.1%	19	0.1%	13	0.1%	19	0.1%
<b>Hispanic</b>	355	1.7%	393	1.9%	411	1.9%	504	2.4%	521	2.4%	563	2.6%	595	2.6%
<b>Amer Ind/Alaskan</b>	59	0.3%	73	0.4%	77	0.4%	61	0.3%	54	0.2%	45	0.2%	48	0.2%
<b>White/Caucasian</b>	17,568	86.3%	17,413	84.8%	17,926	84.6%	17,404	81.6%	17,607	80.6%	17,286	79.6%	17,293	79.1%
<b>Two or More Races</b>	—	—	—	—	—	—	382	1.8%	431	2.0%	502	2.3%	571	2.5%
<b>Unknown</b>	—	—	—	—	—	—	288	1.4%	371	1.7%	291	1.3%	315	1.4%
<b>Male</b>	9,973	49.0%	10,073	49.0%	10,228	48.3%	10,371	48.6%	10,654	48.8%	10,672	49.1%	11,065	48.8%
<b>Female</b>	10,377	51.0%	10,464	51.0%	10,954	51.7%	10,953	51.4%	11,194	51.2%	11,052	50.9%	11,592	51.2%
<b>Grand Total</b>	20,350		20,537		21,182		21,324		21,848		21,724		22,657	

Web Link for further information: <http://www.ohio.edu/institres/enrollstats/index.html>



**Ohio University Athens Campus  
Students with Double Majors  
Fall 2013 Undergraduate Headcount Enrollment**

College of First Major	College of Second Major										Total Double Majors	Total Headcount Enrollment	% Double Majors of Total Head-
	Arts & Sciences	Business	Communication	Education	Engineering & Tech.	Fine Arts	Health Sci & Prof	International Std	University College	Voinovich			
Arts & Sciences	240	2	11	12	3	11	26	15	6	1	327	4,083	8.0%
Business	4	708	7	3	1	1	1	0	0	0	725	2,274	31.9%
Communication	16	4	49	8	3	3	0	1	1	0	85	2,136	4.0%
Education	5	1	0	36	0	0	1	0	0	0	43	1,586	2.7%
Engineering & Technology	3	0	0	0	27	1	1	0	5	0	37	1,591	2.3%
Fine Arts	10	4	8	2	2	31	3	1	3	0	64	748	8.6%
Health Sci & Professions	4	0	0	0	0	0	88	0	9	0	101	2,538	4.0%
International Std	5	0	3	0	0	1	1	7	0	0	17	93	18.3%
University College	0	0	0	0	0	0	5	0	21	0	26	2,324	1.1%
Voinovich	0	0	0	0	0	0	0	0	0	0	0	2	0.0%
<b>Total</b>	<b>287</b>	<b>719</b>	<b>78</b>	<b>61</b>	<b>36</b>	<b>48</b>	<b>126</b>	<b>24</b>	<b>45</b>	<b>1</b>	<b>1,425</b>	<b>17,375</b>	<b>8.2%</b>

### 30 Students

## Ohio University Athens Campus Majors with the Greatest Number of Students Enrolled Fall 2013

	<u>Number Enrolled</u>	<u>% of Total Undergraduate</u>
<b>Undergraduate</b>		
Biological Sciences	998	5.7%
Journalism	836	4.8%
Psychology	637	3.7%
Nursing	595	3.4%
Media Arts & Studies	535	3.1%
Sports Administration	467	2.7%
Communication Studies	437	2.5%
Secondary Education	413	2.4%
Marketing	409	2.4%
Sociology	401	2.3%
	<u>Number Enrolled</u>	<u>% of Total Graduate</u>
<b>Graduate</b>		
Nursing	430	9.1%
General Business	391	8.2%
Health Administration	380	8.0%
Curriculum & Instruction	228	4.8%
Sports Administration	225	4.7%
Recreation & Sport Pedagogy	212	4.5%
Industrial & Systems Engineering	166	3.5%
Higher Education	128	2.7%
International Affairs	120	2.5%
Physical Therapy	118	2.5%

Web Link for further information: <http://www.ohio.edu/instres/enrollstats/index.html>

---

## Ohio University Number of Majors, Programs and Degrees Offered

- 25 Associate majors – 25 programs of study; 5 distinct degree designations
- 263 Baccalaureate majors – 101 programs of study; 40 distinct degree designations
- 210 Masters majors – 66 programs of study; 30 distinct degree designations
- 56 Doctoral majors – 32 programs of study\*; 4 distinct degree designation\*\*
- 1 DO major – 1 program of study; 1 distinct degree designation

\*Includes Individualized Instructional Programs (IIP) in each academic college.

\*\*Includes EDD, AuD, and DPT majors.

Note: Major denotes specific major concentrations within an academic program.

Web Link for further information: <http://www.ohio.edu/instres/major/index.html>

# Faculty/Staffing Contents

---

The faculty/staffing section contains data on full-time and part-time employees broken down by job classification and campus. Data is provided on the number of full-time tenure-track faculty and years of service by age for full-time faculty, administrators, and classified staff. This section also contains data on general operating budgeted FTE by job category, student credit hours taught by type of faculty, and the ratio of student credit hours to faculty FTE. The number of employees given are as of the fall quarter for each year.

- All Full-Time and Part-Time Personnel by Campus: Fall 2013
- Number of Group I Faculty: 2007 – 2013
- Number of Group I Faculty by College and Campus: 2007 – 2013
- Athens Campus Budgeted FTE, Credit Hrs Taught, Student/Faculty Ratios: 2007 – 2013
- Arts & Sciences Budgeted FTE, Credit Hrs Taught, Student/Faculty Ratios: 2007 – 2013
- Business Budgeted FTE, Credit Hrs Taught, Student/Faculty Ratios: 2007 – 2013
- Communication Budgeted FTE, Credit Hrs Taught, Student/Faculty Ratios: 2007 – 2013
- Education Budgeted FTE, Credit Hrs Taught, Student/Faculty Ratios: 2007 – 2013
- Engineering & Technology Budgeted FTE, Credit Hrs Taught, Student/Faculty Ratios: 2007 – 2013
- Fine Arts Budgeted FTE, Credit Hrs Taught, Student/Faculty Ratios: 2007 – 2013
- Health Sci & Professions Budgeted FTE, Credit Hrs Taught, Student/Faculty Ratios: 2007 – 2013
- University College Budgeted FTE, Credit Hrs Taught, Student/Faculty Ratios: 2007 – 2013
- Honors Tutorial College Budgeted FTE: 2007 – 2013
- International Studies Budgeted FTE: 2007 – 2013
- Voinovich School Budgeted FTE: 2007 – 2013
- Athens Campus Group I Faculty Eligible to Retire: 2013 – 2014
- Athens Campus Full-Time Administrators Eligible to Retire: 2013 – 2014
- Athens Campus Full-Time Classified Eligible to Retire: 2013 – 2014
- Athens Campus Academic Support Unit Budgeted FTE: 2007 – 2013

## ***Faculty/Staffing Data Definitions:***

---

**Budgeted FTE** - The budgeted full-time equivalent (FTE) staffing summary information comes from units' budget forms. Department chairs and school directors are included as faculty. Full-time graduate assistants are counted as .33 FTE.

**Campus** - The campus at which the employee's contract is written

**Credit Hours Taught** - Total student credit hours taught at the Athens campus

**Student/Faculty Ratio** - Student FTE (student credit hours divided by 15) divided by budgeted FTE

**Type of Employee**

**Faculty** - Refers to employee who holds a faculty contract, which can be of one of the following types:

Group I Faculty - Tenure-track (includes tenured and not-yet-tenured; includes department chairs)

Group II Faculty - Non-tenure track; divided between FT = 1.0 FTE (FT) and less than 1.0 FTE (PT)

Group III Faculty - Part-time, term-by-term appointment

Group IV Faculty - Full-time, term appointment (maximum 3 years)

Early Retired Faculty - Tenured faculty who have chosen to enter into an early retired status of 0.33 FTE

**Administrator** - A full-time contract employee of Ohio University who spends 50 percent or more of his/her time in administrative duties

Academic Administrator - Includes deans, advisors, and other academic administrators

Professional/Technical - Includes laboratory staff, librarians, technicians, and other staff requiring specialized skills

Administrative Staff - Includes nonacademic administrators, executives, directors, and supervisors, accountants, and financial staff

**Classified** - Hourly civil service employees of Ohio University

**Graduate Assistant** - Graduate student with a graduate appointment contract. Full-time graduate assistants are counted as .33 FTE

**Type of Appointment**

Full-Time - Full-time employees that have appointments at 1.0 FTE

Part-Time - Part-time employees that have appointments at less than 1.0 FTE

**Years of Service** - Total number of years of service at Ohio University

**Ohio University**  
**All Full-Time and Part-Time Personnel by Campus**  
**Fall 2013**

	Faculty		Administrators		Classified		Total
	FT	PT	FT	PT	FT	PT	
<b>Athens Campus</b>	887	439	1,119	306	897	78	3,726
<b>Osteopathic Medicine</b>	61	53	131	34	53	3	335
<b>Athens Total</b>	948	492	1,250	340	950	81	4,061
<b>Chillicothe</b>	31	129	14	19	23	0	216
<b>Eastern</b>	17	44	8	4	12	0	85
<b>Lancaster</b>	30	141	18	14	24	1	228
<b>Southern</b>	35	95	22	26	9	2	189
<b>Zanesville</b>	39	72	16	24	28	0	179
<b>Regional Higher Ed Total</b>	152	481	78	87	96	3	897
<b>Grand Total</b>	1,100	973	1,328	427	1,046	84	4,958

Web Link for further information: <http://www.ohio.edu/institres/faculty/staffstats/index.html>

**Ohio University**  
**Headcount of Full-Time Group I Faculty**  
**2007 - 2013**

	2007-08	2008-09	2009-10	2010-11	2011-12	2012-13	2013-14	% Change	
								07-13	12-13
<b>Athens Campus</b>	726	710	727	725	686	663	660	-9.1%	-0.5%
<b>Osteopathic Medicine</b>	61	64	63	61	62	59	58	-4.9%	-1.7%
<b>Regional Higher Ed</b>	132	135	131	130	122	121	122	-7.6%	0.8%

Web Link for further information: <http://www.ohio.edu/institres/faculty/totalfaculty.html>

34 Faculty/Staffing

## Ohio University Headcount of Full-Time Group I Faculty by College and Campus 2007 - 2013

								% Change	
	2007-08	2008-09	2009-10	2010-11	2011-12	2012-13	2013-14	07-13	12-13
<b>Arts &amp; Sciences</b>	324	314	306	303	291	290	290	-10.5%	0.0%
<b>Business*</b>	49	51	49	53	48	49	51	4.1%	4.1%
<b>Communication</b>	84	83	88	86	77	71	72	-14.3%	1.4%
<b>Education*</b>	36	30	33	52	47	44	41	13.9%	-6.8%
<b>Engineering/Technology</b>	80	82	84	85	82	75	75	-6.3%	0.0%
<b>Fine Arts*</b>	92	85	89	91	82	76	73	-20.7%	-3.9%
<b>Health Sci &amp; Professions*</b>	61	65	71	48	52	50	47	-23.0%	-6.0%
<b>Voinovich School</b>	—	—	7	7	7	8	11	—	37.5%
<b>Osteopathic Medicine</b>	61	64	63	61	62	59	58	-4.9%	-1.7%
<b>Athens Total**</b>	787	774	790	786	748	722	718	-8.8%	-0.6%
<b>Chillicothe</b>	32	32	30	31	27	25	23	-28.1%	-8.0%
<b>Eastern</b>	17	17	17	16	15	14	15	-11.8%	7.1%
<b>Lancaster</b>	27	26	26	29	28	27	26	-3.7%	-3.7%
<b>Southern</b>	17	19	19	15	17	20	20	17.6%	0.0%
<b>Zanesville</b>	39	41	39	39	35	35	38	-2.6%	8.6%
<b>Regional Higher Ed Total**</b>	132	135	131	130	122	121	122	-7.6%	0.8%
<b>Grand Total</b>	919	909	921	916	870	843	840	-8.6%	-0.4%

\*Data beginning 2010-11 reflect academic restructuring of academic programs and colleges; prior years' data reflect old structures.

\*\*Between 2008 and 2009, Nursing faculty moved from the regional campuses to the Athens campus.

Web Link for further information: <http://www.ohio.edu/instres/compendium/index.html>

**Ohio University Athens Campus**  
**General Operating Budgeted FTE - Academic Units\***  
**2007 - 2013**

	2007-08	2008-09	2009-10	2010-11	2011-12	2012-13	2013-14	% Change	
								07-13	12-13
<b>Faculty</b>	964.7	951.4	945.4	955.0	929.1	926.0	1002.7	3.9%	8.3%
<b>Graduate Assistant</b>	358.3	365.6	365.6	348.3	361.2	407.2	403.2	12.5%	-1.0%
<b>Classified</b>	116.4	125.4	120.6	110.8	109.7	113.8	120.4	3.4%	5.8%
<b>Academic Admin</b>	22.9	23.9	22.9	24.9	25.4	25.4	29.7	29.7%	16.9%
<b>Admin Staff</b>	100.0	100.0	103.5	95.1	98.8	99.3	142.9	42.9%	43.9%
<b>Prof/Tech</b>	60.2	56.7	55.6	50.2	30.4	28.9	41.8	-30.6%	44.6%

**Fall Quarter Credit Hours Taught\*\***  
**2007 - 2013**

	2007	2008	2009	2010	2011	2012	2013	% Change	
								07-13	12-13
<b>Undergraduate</b>									
Group I Faculty	113,928	117,228	120,905	124,245	115,541	105,352	98,122	-13.9%	-6.9%
Early Retired	15,505	10,761	9,552	6,093	6,533	4,710	5,172	-66.6%	9.8%
Group II Faculty	39,467	41,502	46,592	49,775	54,724	61,406	64,316	63.0%	4.7%
Group III Faculty	15,577	9,490	15,082	14,579	15,234	15,614	15,925	2.2%	2.0%
Group IV Faculty	22,901	28,679	25,704	23,813	24,195	18,753	23,001	0.4%	22.7%
Graduate Teaching Asst.	39,895	44,394	39,003	39,415	43,416	30,430	30,592	-23.3%	0.5%
Other Part Time***	13,877	12,566	11,877	11,129	12,720	12,652	20,101	44.9%	58.9%
<b>Total Undergraduate</b>	<b>261,150</b>	<b>264,620</b>	<b>268,715</b>	<b>269,049</b>	<b>272,363</b>	<b>248,914</b>	<b>257,229</b>	<b>-1.5%</b>	<b>3.3%</b>
<b>Graduate</b>									
Group I Faculty	34,757	35,562	36,455	46,056	43,664	41,682	35,869	3.2%	-13.9%
Early Retired	1,256	864	819	941	977	618	608	-51.6%	-1.6%
Group II Faculty	1,671	2,459	3,111	2,954	5,369	5,615	6,339	279.4%	12.9%
Group III Faculty	642	223	1,891	1,531	2,994	2,636	3,208	399.7%	21.7%
Group IV Faculty	1,192	1,347	1,259	1,050	1,013	675	673	-43.5%	-0.3%
Graduate Teaching Asst.	1,114	1,327	490	382	1,548	1,100	430	-61.4%	-60.9%
Other Part Time***	11,318	10,147	10,305	1,669	2,402	2,525	11,749	3.8%	365.3%
<b>Total Graduate</b>	<b>51,950</b>	<b>51,929</b>	<b>54,330</b>	<b>54,583</b>	<b>57,967</b>	<b>54,851</b>	<b>58,935</b>	<b>13.4%</b>	<b>7.4%</b>

**Student/Faculty Ratios**  
**2007 - 2013**

	2007-08	2008-09	2009-10	2010-11	2011-12	2012-13	2013-14	% Change	
								07-13	12-13
<b>Student/All Faculty</b>	20.8	21.3	21.8	21.5	22.6	20.8	20.0	-3.8%	-3.8%
<b>Student/All Faculty + G.A.</b>	15.2	15.4	15.8	15.8	16.3	14.4	14.2	-6.6%	-1.4%

\*Budgeted FTE in academic support units can be found on pages 48-49.

\*\*Includes the College of Osteopathic Medicine.

\*\*\*Administrators, non Ohio University faculty, etc.

Web Link for further information: <http://www.ohio.edu/institres/compendium/index.html>

36 Faculty/Staffing

Ohio University Athens Campus  
College of Arts & Sciences

General Operating Budgeted FTE  
2007 - 2013

	2007-08	2008-09	2009-10	2010-11	2011-12	2012-13	2013-14	% Change	
								07-13	12-13
<b>Faculty</b>	438.9	438.6	430.5	457.2	440.9	434.1	454.5	3.6%	4.7%
<b>Graduate Assistant</b>	160.3	163.2	162.3	153.3	160.9	184.0	185.2	15.5%	0.7%
<b>Classified</b>	37.2	39.8	38.4	32.3	35.3	36.0	36.2	-2.7%	0.6%
<b>Academic Admin</b>	4.0	3.0	3.0	3.0	3.0	4.0	4.0	0.0%	0.0%
<b>Admin Staff</b>	31.3	26.4	29.7	28.1	27.3	27.1	29.1	-7.0%	7.4%
<b>Prof/Tech</b>	24.1	20.1	20.6	19.4	12.6	11.5	13.5	-44.0%	17.4%

Fall Quarter Credit Hours Taught  
2007 - 2013

	2007	2008	2009	2010	2011	2012	2013	% Change	
								07-13	12-13
<b>Undergraduate</b>									
Group I Faculty	60,043	59,572	58,936	60,394	59,074	55,010	49,908	-16.9%	-9.3%
Early Retired	10,396	6,999	7,237	3,457	2,887	2,012	1,571	-84.9%	-21.9%
Group II Faculty	20,482	19,871	25,537	29,065	30,937	33,425	33,148	61.8%	-0.8%
Group III Faculty	8,871	4,404	8,022	8,465	9,209	7,666	8,400	-5.3%	9.6%
Group IV Faculty	16,526	23,884	22,617	20,643	17,027	12,195	15,533	-6.0%	27.4%
Graduate Teaching Asst.	22,458	27,155	22,463	22,530	23,707	17,127	17,383	-22.6%	1.5%
Other Part Time*	1,565	1,108	1,483	1,485	1,648	1,163	3,806	143.2%	227.3%
<b>Total Undergraduate</b>	<b>140,341</b>	<b>142,993</b>	<b>146,295</b>	<b>146,039</b>	<b>144,489</b>	<b>128,598</b>	<b>129,749</b>	<b>-7.5%</b>	<b>0.9%</b>
<b>Graduate</b>									
Group I Faculty	10,205	11,014	10,906	10,845	10,295	9,430	9,619	-5.7%	2.0%
Early Retired	501	404	202	275	124	9	22	-95.6%	144.4%
Group II Faculty	416	241	277	296	650	641	761	82.9%	18.7%
Group III Faculty	78	42	377	311	95	81	89	14.1%	9.9%
Group IV Faculty	675	570	552	466	270	88	148	-78.1%	68.2%
Graduate Teaching Asst.	266	249	233	199	208	176	63	-76.3%	-64.2%
Other Part Time*	213	232	236	180	211	88	382	79.3%	334.1%
<b>Total Graduate</b>	<b>12,354</b>	<b>12,752</b>	<b>12,783</b>	<b>12,572</b>	<b>11,853</b>	<b>10,513</b>	<b>11,084</b>	<b>-10.3%</b>	<b>5.4%</b>

Student/Faculty Ratios  
2007 - 2013

	2007-08	2008-09	2009-10	2010-11	2011-12	2012-13	2013-14	% Change	
								07-13	12-13
<b>Student/All Faculty</b>	22.9	23.4	24.4	22.9	23.6	21.4	20.7	-9.6%	-3.3%
<b>Student/All Faculty + G.A.</b>	16.8	17.1	17.7	17.2	17.3	15.0	14.7	-12.5%	-2.0%

\*Administrators, non Ohio University faculty, etc.

Web Link for further information: <http://www.ohio.edu/institres/compendium/index.html>



## Ohio University Athens Campus College of Business\*

### General Operating Budgeted FTE 2007 - 2013

	2007-08	2008-09	2009-10	2010-11	2011-12	2012-13	2013-14	% Change	
								07-13	12-13
<b>Faculty</b>	68.6	72.2	65.6	68.9	71.5	70.7	80.6	17.5%	14.0%
<b>Graduate Assistant</b>	9.6	9.6	9.6	9.6	12.6	12.6	12.6	31.3%	0.0%
<b>Classified</b>	7.0	8.0	7.5	7.5	6.0	6.0	7.0	0.0%	16.7%
<b>Academic Admin</b>	2.0	2.0	2.5	2.5	3.2	3.2	3.8	90.0%	18.7%
<b>Admin Staff</b>	3.0	3.0	3.0	3.0	4.0	4.0	12.7	323.3%	217.5%
<b>Prof/Tech</b>	0.0	0.0	0.0	0.0	0.0	0.0	3.0	—	—

### Fall Quarter Credit Hours Taught 2007 - 2013

	2007	2008	2009	2010	2011	2012	2013	% Change	
								07-13	12-13
<b>Undergraduate</b>									
Group I Faculty	9,892	10,041	12,376	13,979	14,398	12,032	10,765	8.8%	-10.5%
Early Retired	1,138	672	1,096	1,124	1,136	960	1,299	14.1%	35.3%
Group II Faculty	7,320	9,152	8,300	8,769	7,651	8,596	9,301	27.1%	8.2%
Group III Faculty	2,126	1,394	1,396	1,180	1,056	927	2,118	-0.4%	128.5%
Group IV Faculty	1,864	1,688	717	1,145	2,120	1,041	2,388	28.1%	129.4%
Graduate Teaching Asst.	470	880	0	0	164	1,245	315	-33.0%	-74.7%
Other Part Time**	1,956	1,280	1,173	751	719	1,318	2,102	7.5%	59.5%
<b>Total Undergraduate</b>	<b>24,766</b>	<b>25,107</b>	<b>25,058</b>	<b>26,948</b>	<b>27,244</b>	<b>26,119</b>	<b>28,288</b>	<b>14.2%</b>	<b>8.3%</b>
<b>Graduate</b>									
Group I Faculty	2,972	3,623	3,099	2,779	1,478	1,245	1,520	-48.9%	22.1%
Early Retired	116	4	54	4	113	51	0	-100.0%	-100.0%
Group II Faculty	182	4	0	96	1,008	501	844	363.7%	68.5%
Group III Faculty	16	8	0	136	181	309	368	2200.0%	19.1%
Group IV Faculty	0	0	23	20	0	0	0	0.0%	0.0%
Graduate Teaching Asst.	496	0	0	0	0	356	6	-98.8%	-98.3%
Other Part Time**	2,048	1,906	433	475	970	964	1,101	-46.2%	14.2%
<b>Total Graduate</b>	<b>5,830</b>	<b>5,545</b>	<b>3,609</b>	<b>3,510</b>	<b>3,750</b>	<b>3,426</b>	<b>3,839</b>	<b>-34.2%</b>	<b>12.1%</b>

### Student/Faculty Ratios 2007 - 2013

	2007-08	2008-09	2009-10	2010-11	2011-12	2012-13	2013-14	% Change	
								07-13	12-13
<b>Student/All Faculty</b>	29.8	28.3	29.1	29.5	28.9	27.9	26.6	-10.7%	-4.7%
<b>Student/All Faculty + G.A.</b>	26.1	25.0	25.4	25.9	24.6	23.7	23.0	-11.9%	-3.0%

\*Data beginning 2010-11 reflect academic restructuring of academic programs and colleges; prior years' data reflect old structures.

\*\*Administrators, non Ohio University faculty, etc.

Web Link for further information: <http://www.ohio.edu/institres/compendium/index.html>

## 38 Faculty/Staffing

### Ohio University Athens Campus Scripps College of Communication

#### General Operating Budgeted FTE 2007 - 2013

	2007-08	2008-09	2009-10	2010-11	2011-12	2012-13	2013-14	% Change	
								07-13	12-13
<b>Faculty</b>	94.3	92.6	93.1	90.2	84.6	83.6	88.9	-5.7%	6.3%
<b>Graduate Assistant</b>	32.8	33.1	32.1	32.1	32.1	32.1	32.1	-2.1%	0.0%
<b>Classified</b>	7.5	7.8	6.8	5.8	5.8	6.8	6.8	-9.3%	0.0%
<b>Academic Admin</b>	3.0	3.0	3.0	3.0	3.0	2.0	3.0	0.0%	50.0%
<b>Admin Staff</b>	11.6	8.6	7.9	7.2	7.2	6.9	9.1	-21.6%	31.9%
<b>Prof/Tech</b>	1.0	0.5	0.0	0.0	0.0	0.0	3.0	200.0%	—

#### Fall Quarter Credit Hours Taught 2007 - 2013

	2007	2008	2009	2010	2011	2012	2013	% Change	
								07-13	12-13
<b>Undergraduate</b>									
Group I Faculty	12,904	14,259	14,522	14,284	13,425	10,388	10,686	-17.2%	2.9%
Early Retired	497	836	528	740	891	549	1,011	103.4%	84.2%
Group II Faculty	358	75	129	438	565	1,709	2,143	498.6%	25.4%
Group III Faculty	1,043	876	1,533	1,517	1,321	768	435	-58.3%	-43.4%
Group IV Faculty	2,129	924	904	273	793	1,464	621	-70.8%	-57.6%
Graduate Teaching Asst.	6,860	7,005	7,116	7,455	7,141	4,737	4,763	-30.6%	0.5%
Other Part Time*	2,276	2,461	1,096	960	2,533	2,741	3,512	54.3%	28.1%
<b>Total Undergraduate</b>	<b>26,067</b>	<b>26,436</b>	<b>25,828</b>	<b>25,667</b>	<b>26,669</b>	<b>22,356</b>	<b>23,171</b>	<b>-11.1%</b>	<b>3.6%</b>
<b>Graduate</b>									
Group I Faculty	2,366	2,688	2,531	2,684	2,809	2,357	2,710	14.5%	15.0%
Early Retired	0	0	0	0	12	84	151	—	79.8%
Group II Faculty	0	0	0	27	50	17	31	—	82.4%
Group III Faculty	0	0	0	4	0	65	76	—	16.9%
Group IV Faculty	69	57	11	44	145	72	3	-95.7%	-95.8%
Graduate Teaching Asst.	110	30	16	15	13	13	0	-100.0%	-100.0%
Other Part Time*	130	88	204	68	12	15	14	-89.2%	-6.7%
<b>Total Graduate</b>	<b>2,675</b>	<b>2,863</b>	<b>2,762</b>	<b>2,842</b>	<b>3,041</b>	<b>2,623</b>	<b>2,985</b>	<b>11.6%</b>	<b>13.8%</b>

#### Student/Faculty Ratios 2007 - 2013

	2007-08	2008-09	2009-10	2010-11	2011-12	2012-13	2013-14	% Change	
								07-13	12-13
<b>Student/All Faculty</b>	20.3	21.1	20.5	21.1	23.4	19.9	19.6	-3.4%	-1.5%
<b>Student/All Faculty + G.A.</b>	15.1	15.5	15.2	15.5	17.0	14.4	14.4	-4.6%	0.0%

\*Administrators, non Ohio University faculty, etc.

Web Link for further information: <http://www.ohio.edu/institres/compendium/index.html>

## Ohio University Athens Campus Patton College of Education\*

### General Operating Budgeted FTE 2007 - 2013

	2007-08	2008-09	2009-10	2010-11	2011-12	2012-13	2013-14	% Change	
								07-13	12-13
<b>Faculty</b>	55.7	49.0	48.5	69.7	69.4	75.0	80.9	45.2%	7.9%
<b>Graduate Assistant</b>	22.8	25.0	25.0	24.9	21.8	30.7	25.2	10.5%	-17.9%
<b>Classified</b>	12.0	14.0	11.0	12.0	11.0	14.0	14.0	16.7%	0.0%
<b>Academic Admin</b>	3.0	3.0	2.5	3.5	3.0	3.0	3.0	0.0%	0.0%
<b>Admin Staff</b>	6.0	3.5	5.0	5.5	5.1	5.5	7.0	16.7%	27.3%
<b>Prof/Tech</b>	2.2	1.0	0.0	0.0	0.0	0.0	5.0	127.3%	—

### Fall Quarter Credit Hours Taught 2007 - 2013

	2007	2008	2009	2010	2011	2012	2013	% Change	
								07-13	12-13
<b>Undergraduate</b>									
Group I Faculty	2,680	1,427	1,927	5,793	4,625	4,404	3,273	22.1%	-25.7%
Early Retired	320	157	160	515	1,391	594	485	51.6%	-18.4%
Group II Faculty	2,892	3,463	2,746	4,266	5,097	5,941	5,870	103.0%	-1.2%
Group III Faculty	1,060	997	2,007	1,797	1,171	1,745	1,702	60.6%	-2.5%
Group IV Faculty	183	547	494	923	1,159	918	1,010	451.9%	10.0%
Graduate Teaching Asst.	1,968	1,673	1,192	2,367	2,412	2,658	2,440	24.0%	-8.2%
Other Part Time**	776	1,161	668	1,608	1,118	485	1,621	108.9%	234.2%
<b>Total Undergraduate</b>	<b>9,879</b>	<b>9,425</b>	<b>9,194</b>	<b>17,269</b>	<b>16,973</b>	<b>16,745</b>	<b>16,401</b>	<b>66.0%</b>	<b>-2.1%</b>
<b>Graduate</b>									
Group I Faculty	4,408	3,761	4,332	5,257	5,016	4,511	4,409	0.0%	-2.3%
Early Retired	482	383	554	625	699	307	274	-43.2%	-10.7%
Group II Faculty	479	1,050	924	844	1,428	1,363	1,112	132.2%	-18.4%
Group III Faculty	384	77	869	320	399	976	553	44.0%	-43.3%
Group IV Faculty	132	143	373	48	3	150	87	-34.1%	-42.0%
Graduate Teaching Asst.	163	777	92	14	1,082	206	296	81.6%	43.7%
Other Part Time**	590	438	367	280	557	339	1,023	73.4%	201.8%
<b>Total Graduate</b>	<b>6,638</b>	<b>6,629</b>	<b>7,511</b>	<b>7,388</b>	<b>9,184</b>	<b>7,852</b>	<b>7,754</b>	<b>16.8%</b>	<b>-1.2%</b>

### Student/Faculty Ratios 2007 - 2013

	2007-08	2008-09	2009-10	2010-11	2011-12	2012-13	2013-14	% Change	
								07-13	12-13
<b>Student/All Faculty</b>	19.8	21.8	23.0	23.6	25.1	21.9	19.9	0.5%	-9.1%
<b>Student/All Faculty + G.A.</b>	14.0	14.5	15.2	17.4	19.1	15.5	15.2	8.6%	-1.9%

\*Data beginning 2010-11 reflect academic restructuring of academic programs and colleges; prior years' data reflect old structures.

\*\*Administrators, Early Retired faculty, non Ohio University faculty, etc.

Web Link for further information: <http://www.ohio.edu/instres/compendium/index.html>

## 40 Faculty/Staffing

### Ohio University Athens Campus Russ College of Engineering & Technology

#### General Operating Budgeted FTE 2007 - 2013

	2007-08	2008-09	2009-10	2010-11	2011-12	2012-13	2013-14	% Change	
								07-13	12-13
<b>Faculty</b>	97.5	96.4	93.7	89.3	88.9	89.5	102.1	4.7%	14.1%
<b>Graduate Assistant</b>	31.3	32.1	32.2	27.9	28.5	28.6	28.7	-8.3%	0.3%
<b>Classified</b>	13.3	13.3	15.2	13.8	12.8	12.8	13.0	-2.3%	1.6%
<b>Academic Admin</b>	2.0	2.0	2.0	3.0	3.0	2.9	2.9	45.0%	0.0%
<b>Admin Staff</b>	9.3	11.6	10.6	6.0	2.9	2.9	7.8	-16.1%	169.0%
<b>Prof/Tech</b>	9.9	10.0	10.0	8.9	1.0	1.0	1.0	-89.9%	0.0%

#### Fall Quarter Credit Hours Taught 2007 - 2013

	2007	2008	2009	2010	2011	2012	2013	% Change	
								07-13	12-13
<b>Undergraduate</b>									
Group I Faculty	7,007	8,117	8,227	7,803	8,754	8,208	8,546	22.0%	4.1%
Early Retired	304	64	76	80	0	318	573	88.5%	80.2%
Group II Faculty	1,373	887	928	1,455	1,209	1,297	1,980	44.2%	52.7%
Group III Faculty	515	577	396	160	376	327	315	-38.8%	-3.7%
Group IV Faculty	0	65	0	0	0	81	296	—	265.4%
Graduate Teaching Asst.	0	165	229	124	362	36	166	—	361.1%
Other Part Time*	403	109	322	455	486	524	910	125.8%	73.7%
<b>Total Undergraduate</b>	<b>9,602</b>	<b>9,984</b>	<b>10,178</b>	<b>10,077</b>	<b>11,187</b>	<b>10,791</b>	<b>12,786</b>	<b>33.2%</b>	<b>18.5%</b>
<b>Graduate</b>									
Group I Faculty	3,109	2,860	3,003	3,216	3,273	3,480	3,471	11.6%	-0.3%
Early Retired	8	33	1	1	0	15	36	350.0%	140.0%
Group II Faculty	12	0	8	20	39	85	314	2516.7%	269.4%
Group III Faculty	24	0	0	0	114	208	157	554.2%	-24.5%
Group IV Faculty	0	28	0	0	0	0	0	0.0%	0.0%
Graduate Teaching Asst.	13	30	6	9	0	66	10	-23.1%	-84.8%
Other Part Time*	89	40	33	72	77	18	49	-44.9%	172.2%
<b>Total Graduate</b>	<b>3,255</b>	<b>2,991</b>	<b>3,051</b>	<b>3,318</b>	<b>3,503</b>	<b>3,872</b>	<b>4,037</b>	<b>24.0%</b>	<b>4.3%</b>

#### Student/Faculty Ratios 2007 - 2013

	2007-08	2008-09	2009-10	2010-11	2011-12	2012-13	2013-14	% Change	
								07-13	12-13
<b>Student/All Faculty</b>	8.8	9.0	9.4	10.0	11.0	10.9	11.0	25.0%	0.9%
<b>Student/All Faculty + G.A.</b>	6.7	6.7	7.0	7.6	8.3	8.3	8.6	28.4%	3.6%

\*Administrators, non Ohio University faculty, etc.

Web Link for further information: <http://www.ohio.edu/institres/compendium/index.html>

**Ohio University Athens Campus  
College of Fine Arts\***

**General Operating Budgeted FTE  
2007 - 2013**

	2007-08	2008-09	2009-10	2010-11	2011-12	2012-13	2013-14	% Change	
								07-13	12-13
<b>Faculty</b>	103.6	97.7	105.3	99.0	92.8	95.8	99.2	-4.2%	3.5%
<b>Graduate Assistant</b>	47.8	49.5	49.5	49.5	49.5	49.5	49.5	3.6%	0.0%
<b>Classified</b>	13.1	13.6	11.1	10.6	10.6	10.6	10.6	-19.1%	0.0%
<b>Academic Admin</b>	2.0	3.0	3.0	3.0	3.0	3.0	2.0	0.0%	-33.3%
<b>Admin Staff</b>	7.4	6.6	7.0	6.0	4.5	5.5	5.7	-23.0%	3.6%
<b>Prof/Tech</b>	11.5	13.0	13.0	11.0	9.0	7.0	7.0	-39.1%	0.0%

**Fall Quarter Credit Hours Taught  
2007 - 2013**

	2007	2008	2009	2010	2011	2012	2013	% Change	
								07-13	12-13
<b>Undergraduate</b>									
Group I Faculty	10,737	11,838	13,463	13,920	9,184	8,554	7,795	-27.4%	-8.9%
Early Retired	159	211	230	177	228	277	233	46.5%	-15.9%
Group II Faculty	52	106	145	407	508	222	236	353.8%	6.3%
Group III Faculty	186	59	114	505	470	1,453	919	394.1%	-36.8%
Group IV Faculty	2,199	1,339	868	819	2,581	3,021	3,110	41.4%	2.9%
Graduate Teaching Asst.	4,830	4,031	4,913	4,835	6,143	3,293	4,302	-10.9%	30.6%
Other Part Time**	755	1,069	1,354	1,143	1,202	1,284	1,062	40.7%	-17.3%
<b>Total Undergraduate</b>	<b>18,918</b>	<b>18,653</b>	<b>21,087</b>	<b>21,806</b>	<b>20,316</b>	<b>18,103</b>	<b>17,657</b>	<b>-6.7%</b>	<b>-2.5%</b>
<b>Graduate</b>									
Group I Faculty	3,121	2,692	3,264	3,456	3,339	3,173	3,215	3.0%	1.3%
Early Retired	149	12	8	36	0	25	11	-92.6%	-56.0%
Group II Faculty	94	140	183	155	122	102	162	72.3%	58.8%
Group III Faculty	0	0	13	52	41	25	19	—	-24.0%
Group IV Faculty	209	475	265	155	227	356	432	106.7%	21.3%
Graduate Teaching Asst.	10	40	3	0	28	0	12	20.0%	—
Other Part Time**	203	130	136	175	144	86	112	-44.8%	30.2%
<b>Total Graduate</b>	<b>3,786</b>	<b>3,489</b>	<b>3,872</b>	<b>4,029</b>	<b>3,901</b>	<b>3,767</b>	<b>3,962</b>	<b>4.6%</b>	<b>5.2%</b>

**Student/Faculty Ratios  
2007 - 2013**

	2007-08	2008-09	2009-10	2010-11	2011-12	2012-13	2013-14	% Change	
								07-13	12-13
<b>Student/All Faculty</b>	14.6	15.1	15.8	17.4	17.4	15.2	14.5	-0.7%	-4.6%
<b>Student/All Faculty + G.A.</b>	10.0	10.0	10.8	11.6	11.3	10.0	9.7	-3.0%	-3.0%

\*Data beginning 2010-11 reflect academic restructuring of academic programs and colleges; prior years' data reflect old structures.

\*\*Administrators, non Ohio University faculty, etc.

Web Link for further information: <http://www.ohio.edu/institres/compendium/index.html>

## 42 Faculty/Staffing

### Ohio University Athens Campus College of Health Sciences & Professions\*

#### General Operating Budgeted FTE 2007 - 2013

	2007-08	2008-09	2009-10	2010-11	2011-12	2012-13	2013-14	% Change	
								07-13	12-13
<b>Faculty</b>	100.8	100.4	101.6	72.3	72.3	68.7	82.8	-17.9%	20.5%
<b>Graduate Assistant</b>	41.0	37.6	36.8	32.8	34.1	36.5	30.9	-24.6%	-15.3%
<b>Classified</b>	13.3	12.5	13.8	12.6	12.6	12.0	17.0	27.8%	41.7%
<b>Academic Admin</b>	2.0	3.0	2.0	2.0	2.0	2.0	5.0	150.0%	150.0%
<b>Admin Staff</b>	11.0	10.6	8.1	6.0	7.0	8.8	22.6	105.5%	156.8%
<b>Prof/Tech</b>	5.2	3.2	2.7	1.7	1.0	2.0	2.0	-61.5%	0.0%

#### Fall Quarter Credit Hours Taught 2007 - 2013

	2007	2008	2009	2010	2011	2012	2013	% Change	
								07-13	12-13
<b>Undergraduate</b>									
Group I Faculty	10,105	11,374	10,892	7,514	5,556	5,879	6,210	-38.5%	5.6%
Early Retired	2,691	1,822	225	0	0	0	0	-100.0%	0.0%
Group II Faculty	6,797	7,889	8,692	5,166	7,929	9,518	10,983	61.6%	15.4%
Group III Faculty	1,650	1,144	1,506	823	1,102	2,208	1,545	-6.4%	-30.0%
Group IV Faculty	0	207	104	0	480	0	0	0.0%	0.0%
Graduate Teaching Asst.	2,785	2,783	2,611	1,669	2,740	298	391	-86.0%	31.2%
Other Part Time**	3,320	2,376	2,381	967	996	1,256	2,246	-32.3%	78.8%
<b>Total Undergraduate</b>	<b>27,348</b>	<b>27,595</b>	<b>26,411</b>	<b>16,139</b>	<b>18,803</b>	<b>19,159</b>	<b>21,375</b>	<b>-21.8%</b>	<b>11.6%</b>
<b>Graduate</b>									
Group I Faculty	3,441	3,833	4,018	4,188	3,337	3,431	3,628	5.4%	5.7%
Early Retired	0	28	0	0	29	127	114	—	-10.2%
Group II Faculty	316	736	1,425	1,320	1,838	2,329	2,815	790.8%	20.9%
Group III Faculty	140	96	632	708	2,030	972	1,895	1253.6%	95.0%
Group IV Faculty	107	64	35	317	333	0	0	-100.0%	0.0%
Graduate Teaching Asst.	56	201	140	145	150	131	0	-100.0%	-100.0%
Other Part Time**	794	440	499	363	346	906	764	-3.8%	-15.7%
<b>Total Graduate</b>	<b>4,854</b>	<b>5,398</b>	<b>6,749</b>	<b>7,041</b>	<b>8,063</b>	<b>7,896</b>	<b>9,216</b>	<b>89.9%</b>	<b>16.7%</b>

#### Student/Faculty Ratios 2007 - 2013

	2007-08	2008-09	2009-10	2010-11	2011-12	2012-13	2013-14	% Change	
								07-13	12-13
<b>Student/All Faculty</b>	24.7	23.8	24.0	21.4	24.8	26.3	24.6	-0.4%	-6.5%
<b>Student/All Faculty + G.A.</b>	18.0	18.2	18.6	14.7	16.8	17.1	17.9	-0.6%	4.7%

\*Data beginning 2010-11 reflect academic restructuring of academic programs and colleges; prior years' data reflect old structures.

\*\*Administrators, non Ohio University faculty, etc.

Web Link for further information: <http://www.ohio.edu/institres/compendium/index.html>

## Ohio University Athens Campus University College

### General Operating Budgeted FTE 2007 - 2013

	2007-08	2008-09	2009-10	2010-11	2011-12	2012-13	2013-14	% Change	
								07-13	12-13
<b>Faculty</b>	0.0	0.0	0.0	0.0	0.0	0.0	0.5	—	—
<b>Graduate Assistant</b>	1.7	2.6	6.0	5.4	6.6	6.6	14.1	729.4%	113.6%
<b>Classified</b>	8.3	9.0	8.0	8.0	8.0	8.0	8.0	-3.6%	0.0%
<b>Academic Admin</b>	2.0	2.0	2.0	2.0	2.0	2.0	2.0	0.0%	0.0%
<b>Admin Staff</b>	13.1	12.1	14.3	15.4	19.7	18.3	23.6	80.2%	29.0%
<b>Prof/Tech</b>	3.8	5.3	5.6	5.6	4.1	4.1	4.6	21.1%	12.2%

### Fall Quarter Credit Hours Taught 2007 - 2013

	2007	2008	2009	2010	2011	2012	2013	% Change	
								07-13	12-13
<b>Undergraduate</b>									
Group I Faculty	560	600	562	558	525	833	871	55.5%	4.6%
Early Retired	0	0	0	0	0	0	0	0.0%	0.0%
Group II Faculty	193	59	115	209	148	110	178	-7.8%	61.8%
Group III Faculty	126	39	108	132	101	328	172	36.5%	-47.6%
Group IV Faculty	0	0	0	10	0	0	13	—	—
Graduate Teaching Asst.	519	702	479	435	487	744	567	9.2%	-23.8%
Other Part Time*	2,662	2,828	3,208	3,484	3,436	3,046	4,089	53.6%	34.2%
<b>Total Undergraduate</b>	<b>4,060</b>	<b>4,228</b>	<b>4,472</b>	<b>4,828</b>	<b>4,697</b>	<b>5,061</b>	<b>5,890</b>	<b>45.1%</b>	<b>16.4%</b>

\*Administrators, non Ohio University faculty, etc.

Web Link for further information: <http://www.ohio.edu/instres/compendium/index.html>

44 Faculty/Staffing

Ohio University Athens Campus

Honors Tutorial College  
General Operating Budgeted FTE  
2007 -2013

	2007-08	2008-09	2009-10	2010-11	2011-12	2012-13	2013-14	% Change	
								07-13	12-13
Faculty	0.8	0.0	0.0	0.0	0.0	0.0	0.5	-37.5%	—
Graduate Assistant	0.0	0.0	0.0	0.0	0.0	0.0	0.0	0.0%	0.0%
Classified	2.0	2.5	2.5	2.5	1.5	1.6	0.8	-60.0%	-50.0%
Academic Admin	2.0	2.0	2.0	2.0	2.0	2.0	2.0	0.0%	0.0%
Admin Staff	1.0	1.8	1.9	1.9	2.0	2.2	3.0	200.0%	36.4%
Prof/Tech	0.0	0.0	0.0	0.0	0.0	0.0	0.0	0.0%	0.0%

International Studies

General Operating Budgeted FTE  
2007 - 2013

	2007-08	2008-09	2009-10	2010-11	2011-12	2012-13	2013-14	% Change	
								07-13	12-13
Faculty	1.9	1.8	0.5	1.3	0.5	0.1	1.1	-42.1%	1000.0%
Graduate Assistant	8.5	8.5	7.7	7.2	8.0	9.7	7.8	-8.2%	-19.6%
Classified	2.8	5.0	6.4	5.8	6.0	6.0	7.0	150.0%	16.7%
Academic Admin	1.0	1.0	1.0	1.0	1.0	1.0	1.0	0.0%	0.0%
Admin Staff	4.8	12.9	11.9	11.8	13.8	15.3	19.0	295.8%	24.2%
Prof/Tech	0.0	0.0	0.0	0.0	0.0	0.0	0.0	0.0%	0.0%

Voinovich School of Leadership & Public Affairs

General Operating Budgeted FTE  
2007 -2013

	2007-08	2008-09	2009-10	2010-11	2011-12	2012-13	2013-14	% Change	
								07-13	12-13
Faculty	2.6	2.8	6.6	7.3	8.3	8.6	11.6	346.2%	34.9%
Graduate Assistant	2.6	4.6	4.6	5.7	7.3	17.0	17.0	553.8%	0.0%
Classified	0.0	0.0	0.0	0.0	0.0	0.0	0.0	0.0%	0.0%
Academic Admin	0.0	0.0	0.0	0.0	0.3	0.4	1.0	—	150.0%
Admin Staff	1.6	2.9	4.1	4.2	5.4	3.5	3.3	106.2%	-5.7%
Prof/Tech	2.5	3.7	3.7	3.6	2.7	3.4	2.7	8.0%	-20.6%

Web Link for further information: <http://www.ohio.edu/instres/compendium/index.html>



# Ohio University Athens Campus Full-Time Group I Faculty 2013 - 2014 Eligible to Retire (Shaded)\*

Years of Service	Age										Total
	24 - 29	30 - 34	35 - 39	40 - 44	45 - 49	50 - 54	55 - 59	60 - 64	65 - 69	70+	
0 - 4	3	34	39	19	11	11	5	5	2	0	129
5 - 9	0	3	40	44	28	13	10	4	5	0	147
10 - 14	1	1	6	41	38	34	28	11	5	1	166
15 - 19	0	0	0	6	31	28	23	22	9	1	120
20 - 24	0	0	0	0	4	20	34	16	1	1	76
25 - 29	0	0	0	0	1	5	24	15	6	1	52
30 - 34	0	0	0	0	0	0	1	13	5	0	19
35 - 39	0	0	0	0	0	0	0	1	2	0	3
40 - 49	0	0	0	0	0	0	0	0	1	5	6
<b>Total</b>	4	38	85	110	113	111	125	87	36	9	718

\*Criteria:  
 30 years service, any age  
 5 years service, age 60  
 25 years service, age 55

## Ohio University Athens Campus Full-Time Administrators 2013 - 2014 Eligible to Retire (Shaded)\*

Years of Service	Age										Total
	20 - 29	30 - 34	35 - 39	40 - 44	45 - 49	50 - 54	55 - 59	60 - 64	65 - 69	70+	
0 - 4	140	82	65	44	30	27	25	16	2	0	431
5 - 9	27	58	43	33	31	30	18	10	10	0	260
10 - 14	3	14	44	52	36	34	28	13	3	0	227
15 - 19	0	1	12	31	28	32	32	13	5	0	154
20 - 24	0	0	0	6	20	21	15	11	2	0	75
25 - 29	0	0	0	0	6	26	21	14	5	2	74
30 - 34	0	0	0	0	0	4	11	5	0	0	20
35 - 39	0	0	0	0	0	0	3	0	1	0	4
40+	0	0	0	0	0	0	0	3	1	1	5
<b>Total</b>	170	155	164	166	151	174	153	85	29	3	1,250

\*Criteria:  
 30 years service, any age  
 5 years service, age 60  
 25 years service, age 55

**Ohio University Athens Campus  
Full-Time Classified  
2013 - 2014  
Eligible to Retire (Shaded)\***

Years of Service	Age										Total
	19 - 29	30 - 34	35 - 39	40 - 44	45 - 49	50 - 54	55 - 59	60 - 64	65 - 69	70 +	
0 - 4	43	23	18	17	9	10	9	2	0	0	131
5 - 9	7	26	14	11	26	14	16	3	1	0	118
10 - 14	0	19	27	32	33	32	43	16	2	0	204
15 - 19	0	0	10	30	45	45	43	19	7	1	200
20 - 24	0	0	0	11	26	41	31	17	6	0	132
25 - 29	0	0	0	0	31	48	21	20	6	1	127
30 - 34	0	0	0	0	1	15	6	7	3	2	34
35 - 39	0	0	0	0	0	0	1	0	1	0	2
40 +	0	0	0	0	0	0	0	1	0	1	2
<b>Total</b>	50	68	69	101	171	205	170	85	26	5	950

\*Criteria:  
 30 years service, any age  
 5 years service, age 60  
 25 years service, age 55

48 Faculty/Staffing

**Ohio University Athens Campus  
General Operating Budgeted FTE - Academic Support Units  
2007 - 2013**

								% Change	
	2007-08	2008-09	2009-10	2010-11	2011-12	2012-13	2013-14	07-13	12-13
<b>Office of President Total</b>									
Graduate Assistant	1.0	1.3	0.0	1.0	3.0	1.3	1.3	30.0%	0.0%
Classified	6.0	6.4	5.0	5.0	7.3	6.0	6.0	0.0%	0.0%
Academic Admin	0.0	0.0	0.0	0.0	0.0	0.0	0.0	0.0%	0.0%
Admin Staff	37.8	41.1	38.7	38.0	36.4	38.6	41.5	9.8%	7.5%
Prof/Tech	0.0	0.0	0.0	0.0	0.0	0.0	0.0	0.0%	0.0%
<b>Provost Total</b>									
Graduate Assistant	3.2	2.1	1.5	1.2	2.2	3.0	3.2	0.0%	6.7%
Classified	48.0	47.0	43.2	44.0	39.8	45.8	47.8	-0.4%	4.4%
Academic Admin	4.2	6.0	4.9	4.4	4.2	4.8	5.2	23.8%	8.3%
Admin Staff	67.5	69.2	70.2	61.7	67.0	78.7	81.6	20.9%	3.7%
Prof/Tech	12.8	12.9	12.8	7.8	1.0	1.0	1.0	-92.2%	0.0%
<b>Graduate College</b>									
Graduate Assistant	4.0	3.2	3.3	3.3	2.5	2.7	2.0	-50.0%	-25.9%
Classified	5.7	3.7	4.6	3.7	3.7	3.7	4.5	-21.1%	21.6%
Academic Admin	1.0	0.7	0.7	0.7	0.5	1.0	1.0	0.0%	0.0%
Admin Staff	7.7	6.8	6.8	6.8	9.6	10.6	9.9	28.6%	-6.6%
Prof/Tech	1.0	1.0	1.0	1.0	1.0	1.0	1.0	0.0%	0.0%
<b>WOUB Ctr Public Media (COM)</b>									
Graduate Assistant	0.9	1.3	1.0	1.0	1.0	1.5	1.5	66.7%	0.0%
Classified	2.5	2.5	1.0	1.0	1.5	2.8	2.0	-20.0%	-28.6%
Academic Admin	0.0	0.0	0.0	0.0	0.0	0.0	0.0	0.0%	0.0%
Admin Staff	4.0	3.8	3.4	3.0	1.2	0.0	0.0	-100.0%	0.0%
Prof/Tech	8.2	11.9	23.5	23.5	19.5	19.5	17.5	113.4%	-10.3%
<b>Child Development Ctr (EDU)</b>									
Graduate Assistant	0.0	0.0	0.0	0.0	0.0	0.0	0.0	0.0%	0.0%
Classified	0.0	0.0	0.0	0.0	0.0	0.0	0.0	0.0%	0.0%
Academic Admin	0.0	0.0	0.0	0.0	0.0	0.0	0.0	0.0%	0.0%
Admin Staff	2.0	2.0	2.0	2.0	2.0	2.0	2.0	0.0%	0.0%
Prof/Tech	14.0	14.0	14.0	14.0	14.0	14.0	14.0	0.0%	0.0%
<b>Kennedy Museum (FAR)</b>									
Graduate Assistant	0.0	0.0	0.0	0.0	0.0	0.0	0.0	0.0%	0.0%
Classified	1.0	1.0	1.0	1.0	1.0	1.0	1.0	0.0%	0.0%
Academic Admin	0.0	0.0	0.0	0.0	0.0	0.0	0.0	0.0%	0.0%
Admin Staff	3.7	2.0	4.0	3.8	3.5	3.8	3.7	0.0%	-2.6%
Prof/Tech	0.0	0.0	0.0	0.0	0.0	0.0	0.0	0.0%	0.0%
<b>Therapy Associates (HSP)</b>									
Graduate Assistant	0.0	0.3	0.3	0.7	0.7	0.7	1.1	—	57.1%
Classified	1.8	0.5	0.0	0.0	0.0	0.0	1.0	-44.4%	—
Academic Admin	0.0	0.0	0.0	0.0	0.0	0.0	0.0	0.0%	0.0%
Admin Staff	0.5	0.0	0.0	0.0	0.0	0.0	0.0	-100.0%	0.0%
Prof/Tech	12.1	10.4	11.7	11.2	11.2	11.7	17.2	42.1%	47.0%
<b>VP Research Total</b>									
Graduate Assistant	1.7	1.5	0.4	0.4	0.3	0.0	0.0	-100.0%	0.0%
Classified	7.0	7.0	6.0	4.0	4.0	5.5	5.5	-21.4%	0.0%
Academic Admin	0.0	0.0	0.0	0.0	0.0	0.0	0.0	0.0%	0.0%
Admin Staff	22.0	22.3	20.3	21.9	22.5	22.2	23.0	4.5%	3.6%
Prof/Tech	4.5	4.5	4.5	4.0	4.0	4.0	4.0	-11.1%	0.0%

Web Link for further information: <http://www.ohio.edu/instres/compendium/index.html>

**Ohio University Athens Campus**  
**General Operating Budgeted FTE - Academic Support Units**  
**2007 - 2013**

	2007-08	2008-09	2009-10	2010-11	2011-12	2012-13	2013-14	% Change	
								07-13	12-13
<b>Library</b>									
Graduate Assistant	0.7	0.7	0.7	0.3	0.3	0.7	0.7	0.0%	0.0%
Classified	45.9	49.5	46.0	39.5	39.2	36.6	34.3	-25.3%	-6.3%
Academic Admin	1.0	1.0	3.0	3.0	3.0	3.0	3.0	200.0%	0.0%
Admin Staff	3.0	3.0	4.0	4.0	4.0	4.0	4.0	33.3%	0.0%
Prof/Tech	47.3	45.5	38.4	38.4	36.5	36.3	32.8	-30.7%	-9.6%
<b>Information Technology Total</b>									
Graduate Assistant	0.0	0.3	0.0	0.7	0.0	0.5	0.5	—	0.0%
Classified	38.8	40.0	37.0	34.0	33.0	35.0	37.0	-4.6%	5.7%
Academic Admin	0.0	0.0	0.5	0.3	0.3	1.0	0.3	—	-70.0%
Admin Staff	10.2	10.0	8.0	6.0	6.0	4.0	3.0	-70.6%	-25.0%
Prof/Tech	91.7	100.5	88.8	94.0	102.4	108.3	103.0	12.3%	-4.9%
<b>Intercollegiate Athletics</b>									
Graduate Assistant	16.0	16.0	16.0	14.0	16.0	15.0	15.0	-6.3%	0.0%
Classified	7.0	7.0	6.0	5.0	4.0	4.0	4.0	-42.9%	0.0%
Academic Admin	0.0	0.0	0.0	0.0	0.0	0.0	0.0	0.0%	0.0%
Admin Staff	26.0	27.0	24.0	24.0	24.0	24.0	28.0	7.7%	16.7%
Prof/Tech	47.0	48.0	46.0	46.0	46.0	46.0	46.0	-2.1%	0.0%
<b>VP Student Affairs Total</b>									
Graduate Assistant	7.0	6.9	7.7	7.3	7.3	20.3	8.3	18.6%	-59.1%
Classified	28.0	31.7	27.6	11.0	11.0	8.0	9.0	-67.9%	12.5%
Academic Admin	0.0	0.0	0.0	0.0	0.0	0.0	0.0	0.0%	0.0%
Admin Staff	30.5	35.2	31.0	29.0	29.0	26.0	29.8	-2.3%	14.6%
Prof/Tech	18.0	22.7	20.3	17.0	17.0	13.0	14.0	-22.2%	7.7%
<b>VP for Finance &amp; Admin Total</b>									
Graduate Assistant	0.0	0.0	2.0	2.0	2.0	0.3	0.2	—	-33.3%
Classified	421.9	428.8	494.6	486.2	479.2	485.3	481.8	14.2%	-0.7%
Academic Admin	0.0	0.0	0.0	0.0	0.0	0.0	0.0	0.0%	0.0%
Admin Staff	133.0	137.4	138.2	132.8	131.2	135.4	143.9	8.2%	6.3%
Prof/Tech	10.0	7.0	6.0	6.0	6.0	6.0	6.0	-40.0%	0.0%
<b>VP Advancement Total</b>									
Graduate Assistant	2.0	2.0	1.0	1.0	1.0	0.0	0.0	-100.0%	0.0%
Classified	12.8	12.8	11.0	11.0	10.0	12.0	11.0	-14.1%	-8.3%
Academic Admin	0.0	0.0	0.0	0.0	0.0	0.0	0.0	0.0%	0.0%
Admin Staff	23.0	26.4	49.5	45.5	34.0	35.5	36.0	56.5%	1.4%
Prof/Tech	2.0	2.0	1.0	1.0	1.0	0.0	0.0	-100.0%	0.0%
<b>eLearning, OHIO</b>									
Graduate Assistant	0.7	0.3	0.7	1.0	1.0	0.8	0.0	-100.0%	-100.0%
Classified	11.0	12.2	14.2	14.6	14.6	11.0	13.3	20.9%	20.9%
Academic Admin	1.0	1.0	1.0	0.0	0.0	0.0	0.0	-100.0%	0.0%
Admin Staff	3.3	3.3	4.0	5.0	5.0	12.3	12.3	272.7%	0.0%
Prof/Tech	12.0	14.7	18.0	20.6	20.6	20.0	20.0	66.7%	0.0%

Web Link for further information: <http://www.ohio.edu/institres/compendium/index.html>



# Alumni Contents

---

The alumni section contains data on the number of living alumni broken down by state of residence and Ohio county of residence. This section also contains data on the amounts of annual private gifts to the university.

- Alumni Distribution by State of Residence
- Alumni Distribution by County of Residence
- Annual Private Gifts: 2006-07 to 2012-13



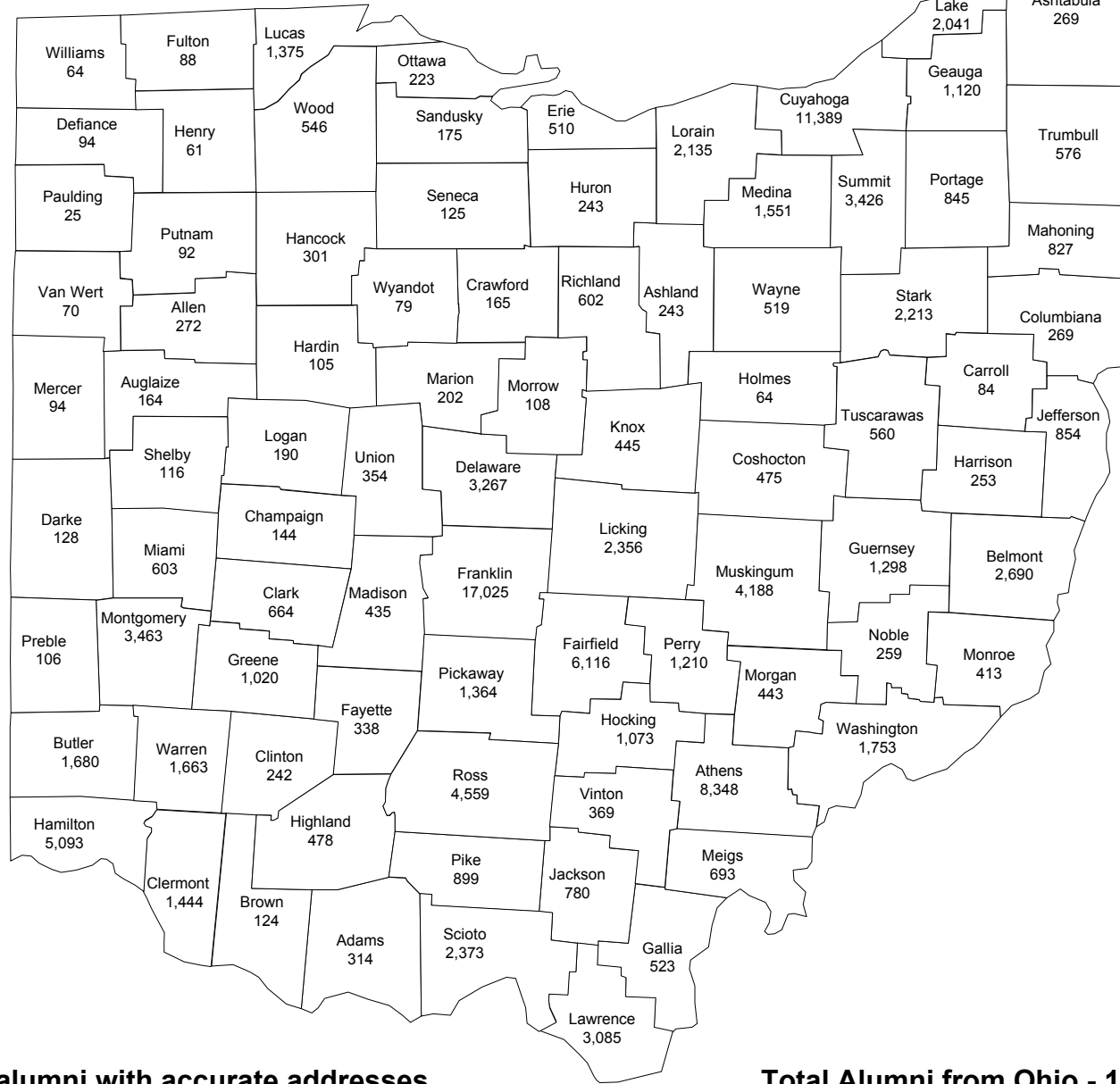


# Alumni Distribution by State of Residence\*



Source: VP for Advancement Office

# Alumni Distribution by County of Residence\*



\*Includes only alumni with accurate addresses

Total Alumni from Ohio - 119,624

**Ohio University  
Annual Private Gifts  
2006-07 to 2012-13**

---

	2006-07	2007-08	2008-09	2009-10	2010-11	2011-12	2012-13	% Change	
								07-13	12-13
<b>Alumni</b>	\$9,290,899	\$17,916,793	\$94,296,943	\$14,815,868	\$4,234,652	\$42,712,603	\$4,806,554	-48.3%	-88.7%
<b>Corporate/ Foundations</b>	\$3,013,382	\$4,623,386	\$7,927,807	\$5,085,579	\$6,324,677	\$6,034,396	\$4,187,295	39.0%	-30.6%
<b>Friends/ Organizations</b>	\$2,005,045	\$4,471,217	\$3,094,924	\$2,488,962	\$3,844,589	\$5,111,928	\$9,528,946	375.2%	86.4%
<b>Total</b>	\$14,309,326	\$27,011,396	\$105,319,674	\$22,390,409	\$14,403,918	\$53,858,927	\$18,522,795	29.4%	-65.6%

Source: VP for University Advancement Office



## Resources & Facilities Contents

---

The resources and facilities section contains data on source of revenues, university expenditures by function, tuition, room, and board fees, annual grants and contracts, financial aid awarded, and number of library holdings by type. This section also contains data on physical facilities by type of room.

- Source of Revenues by Type: Fiscal Years 2006-07 to 2012-13
- University Expenditures by Type: Fiscal Years 2006-07 to 2012-13
- Tuition and Room Fees: 2008-09 to 2014-15
- Grants and Contracts: 2006-07 to 2012-13
- Financial Aid Awarded by Type: 2006-07 to 2012-13
- Library Holdings & Resources by Type: 2006-07 to 2012-13
- Physical Facilities by Room Type: Fall 2013



**Ohio University Athens and Regional Campuses  
Source of Revenues by Type  
Fiscal Years 2006-07 to 2012-13**

	2006-07	2007-08	2008-09	2009-10	2010-11	2011-12	2012-13	% Change	
								07-13	12-13
<b>State/Federal Appropriations*</b>	\$137,197,683	\$144,999,895	\$155,105,566	\$151,734,370	\$154,038,627	\$136,636,074	\$141,351,804	3.0%	3.5%
<b>Student Tuition &amp; Fees<sup>1</sup></b>	\$217,740,577	\$215,984,212	\$229,594,651	\$245,886,316	\$267,334,343	\$282,916,125	\$306,401,788	40.7%	8.3%
<b>Grants and Contracts</b>	\$78,552,380	\$78,214,400	\$90,449,401	\$99,374,960	\$118,227,609	\$112,356,289	\$108,063,723	37.6%	-3.8%
<b>Sales and Services</b>	\$20,321,497	\$21,135,921	\$24,622,431	\$27,151,339	\$57,890,440	\$31,168,276	\$36,756,758	80.9%	17.9%
<b>Auxiliary Services<sup>1</sup></b>	\$65,090,980	\$69,154,022	\$75,094,902	\$82,392,704	\$83,027,005	\$87,059,694	\$89,993,387	38.3%	3.4%
<b>Investment Income<sup>2</sup></b>	\$19,442,211	\$589,929	(\$15,432,315)	\$12,244,259	\$16,751,364	\$3,658,910	\$13,651,450	-29.8%	-273.1%
<b>State Capital Appropriations</b>	\$14,024,105	\$17,603,472	\$24,900,160	\$19,547,635	\$8,542,842	\$6,200,109	\$4,935,547	-64.8%	-20.4%
<b>Other Sources</b>	\$7,302	\$474	\$5,980	\$2,510,700	\$2,512	\$6,565	\$4,694	-35.7%	-28.5%
<b>Total</b>	\$552,376,735	\$547,682,325	\$584,340,776	\$640,842,283	\$705,814,742	\$660,002,042	\$701,159,151	26.9%	6.2%

\*Includes federal appropriations for 2009-10 and 2010-11.

<sup>1</sup>(net of scholarship allowances)

<sup>2</sup>(net of related expense)

Source: Division of Finance

**Ohio University Athens and Regional Campuses  
University Expenditures by Type  
Fiscal Years 2006-07 to 2012-13**

	2006-07	2007-08	2008-09	2009-10	2010-11	2011-12	2012-13	% Change	
								07-13	12-13
<b>Educational &amp; General</b>	\$451,372,082	\$455,337,258	\$481,576,230	\$483,438,242	\$509,500,372	\$510,130,685	\$557,359,858	23.5%	9.3%
<b>Campus Auxiliary</b>	\$70,306,094	\$68,845,947	\$73,500,573	\$83,480,394	\$81,644,816	\$84,371,860	\$86,350,760	22.8%	2.3%
<b>Debt Service</b>	\$7,431,076	\$7,447,971	\$8,492,106	\$7,797,543	\$7,275,033	\$6,130,159	\$6,083,629	-18.1%	-0.8%
<b>Total</b>	\$529,109,252	\$531,631,176	\$563,568,909	\$574,716,179	\$598,420,221	\$600,632,704	\$649,794,247	22.8%	8.2%

Source: Division of Finance

60 Resources & Facilities

**Ohio University Athens and Regional Campuses  
Semester Tuition, Room, and Board Fees  
2008-09 to 2014-15**

	2008-09	2009-10	2010-11	2011-12	2012-13	2013-14	2014-15	% Change	
								09-15	14-15
<b>Athens Campus</b>									
<b>Undergraduate Tuition</b>									
Resident	—	—	—	—	\$5,108	\$5,190	\$5,268	—	1.5%
Non-resident	—	—	—	—	\$9,590	\$9,672	\$9,750	—	0.8%
<b>Graduate Tuition</b>									
Resident	—	—	—	—	\$4,722	\$4,722	\$4,722	—	0.0%
Non-resident	—	—	—	—	\$8,718	\$8,718	\$8,718	—	0.0%
<b>Room &amp; Board</b>	—	—	—	—	\$5,005	\$5,115	\$5,239	—	2.4%
<b>Regional Campuses</b>									
<b>Undergraduate Tuition</b>									
<b>Upper Division</b>									
<b>Chillicothe, Lancaster, Zanesville</b>									
Resident	—	—	—	—	\$2,478	\$2,498	\$2,518	—	0.8%
Non-resident	—	—	—	—	\$3,401	\$4,766	\$4,786	—	0.4%
<b>Eastern, Southern</b>									
Resident	—	—	—	—	\$2,478	\$2,498	\$2,518	—	0.8%
Non-resident	—	—	—	—	\$3,401	\$3,421	\$3,441	—	0.6%
<b>Lower Division</b>									
<b>Chillicothe, Lancaster, Zanesville</b>									
Resident	—	—	—	—	—	\$2,454	\$2,497	—	1.8%
Non-resident	—	—	—	—	—	\$4,722	\$4,765	—	0.9%
<b>Eastern, Southern</b>									
Resident	—	—	—	—	—	\$2,356	\$2,403	—	2.0%
Non-resident	—	—	—	—	—	\$3,279	\$3,326	—	1.4%
<b>Graduate Tuition</b>									
Resident	—	—	—	—	\$4,121	\$4,121	\$4,121	—	0.0%
Non-resident	—	—	—	—	\$4,292	\$4,292	\$4,292	—	0.0%

Web Link for further information: <http://www.ohio.edu/institres/factbook/tuitroom.html>



**Ohio University Athens and Regional Campuses  
Grants and Contracts  
2006-07 to 2012-13**

	2006-07	2007-08	2008-09	2009-10	2010-11	2011-12	2012-13	% Change	
								07-13	12-13
<b>Grants &amp; Contracts</b>	\$71,693,956	\$60,342,043	\$67,797,779	\$66,466,266	\$63,856,296	\$64,216,800	\$64,742,549	-9.7%	0.8%

Source: VP for Research Office

**Ohio University Athens and Regional Campuses  
Financial Aid Awarded by Type  
2006-07 to 2012-13**

	2006-07	2007-08	2008-09	2009-10	2010-11	2011-12*	2012-13*	% Change	
								07-13	12-13
<b>Grants &amp; Scholarships</b>	\$66,992,875	\$71,520,209	\$81,304,868	\$97,159,615	\$110,335,171	\$150,575,044	\$153,184,412	128.7%	1.7%
<b>Loans</b>	\$132,425,796	\$139,381,780	\$163,596,930	\$188,209,219	\$208,049,273	\$241,519,521	\$231,280,640	74.6%	-4.2%
<b>Employment</b>	\$13,739,332	\$14,805,401	\$14,984,702	\$14,782,073	\$15,060,039	\$15,999,360	\$12,989,508	-5.5%	-18.8%
<b>Total Aid</b>	\$213,158,003	\$225,707,390	\$259,886,500	\$300,150,907	\$333,444,483	\$408,093,925	\$397,454,560	86.5%	-2.6%

\*Beginning 2011-12, includes College of Medicine scholarships & loans, Graduate Assistantship scholarships, and Employee Benefit fee waivers.

Source: Student Financial Aid and Scholarships Office

## Ohio University Athens and Regional Campuses Library Holdings & Resources by Type 2006-07 to 2012-13

	2006-07	2007-08	2008-09	2009-10	2010-11	2011-12	2012-13	% Change	
								07-13	12-13
<b>Total Volumes (Print &amp; Electronic)</b>	2,913,522	2,893,238	2,958,684	2,979,370	3,022,185	3,303,976	3,347,476	14.9%	1.3%
<b>Current Serials (Print &amp; Electronic)</b>	39,297	41,741	46,823	52,206	57,813	62,042	69,009	75.6%	11.2%
<b>% of Total Collection Expenditures for Electronic Resources</b>	52%	54%	55%	67%	67%	67%	75%	23.0%	8.0%
<b>Staffed Service Points (Athens Only)</b>	18	16	15	13	11	11	11	-38.9%	0.0%
<b>Weekly Public Service Hours (Athens Only)</b>	146.0	146.0	146.0	146.0	146.0	146.0	146.0	0.0%	0.0%

Source: Ohio University Libraries

Web Link for further information: <http://www.library.ohiou.edu/about/administration/facts-figures/>

## Ohio University Athens Campus Physical Facilities by Room Type: Fall 2013

Type of Room	No. of Rooms	Net Assignable Sq. Ft.
<b>Teaching and Research Facilities</b>		
Classrooms	271	227,299
Laboratories	1,032	515,361
Classroom and Laboratory Service	502	119,429
<b>Offices &amp; Office Services</b>	4,715	795,886
<b>Library and Open Study</b>	364	279,475
<b>Special Use Facilities</b>		
Animal Quarters & Service	66	13,903
Armory	3	1,932
Athletics	243	319,813
Audio-Visual, TV	126	48,339
Chapel & Chapel Service	8	2,152
Day Care	1	164
Demonstration	31	8,629
Greenhouse	18	9,338
<b>General Use Facilities</b>		
Assembly	98	60,012
Conference Room & Service	282	85,963
Exhibit and Museum	57	22,325
Food & Food Service	171	182,062
Lounge	289	135,858
Meeting Rooms	88	40,586
Merchandising	65	20,216
Recreation	49	130,901
<b>Medical Care</b>	222	35,980
<b>Support Facilities</b>		
Circulation	4,776	1,258,138
Custodial	906	65,733
Hazardous Materials	14	8,240
Mechanical	1,058	442,900
OIT	41	12,078
Shop	174	112,386
Central Storage	104	114,445
Vehicle Storage	54	436,044
<b>Residential Facilities</b>		
Apartment	1,096	56,380
Bathroom	878	88,882
Dormitory Rooms	4,549	757,798
Sleep/Study Service	1,329	86,262
House	65	11,794
<b>Public Facilities (Toilet &amp; Restroom)</b>	752	112,693
<b>Unfinished/Inactive</b>	1,870	431,542
<b>Total</b>	26,366	7,038,989

Source: University Planning & Space Management

Web Link for further information: [http://www.ohio.edu/facilities/planning\\_space/inventories\\_and\\_reports.htm](http://www.ohio.edu/facilities/planning_space/inventories_and_reports.htm)



# Comparative Data Contents

---

The comparative data section contains comparative data on Ohio's public universities and regional campuses. It includes tuition and fees, headcount enrollment, outcomes measures, retention rates, graduation rates, degrees granted, financial aid awarded, and external research support data in comparison to other Ohio state-supported institutions. This section also contains Ohio University mean ACT scores in comparison to state and national ACT scores.

- Public Doctoral/Research-Extensive Universities: Ohio University Peers - Peer Assessment
- Public Doctoral/Research-Extensive Universities: Ohio University Peers - Freshman Admissions Selectivity
- Public Doctoral/Research-Extensive Universities: Ohio University Peers - Retention and Graduation Rates
- Public Doctoral/Research-Extensive Universities: Ohio University Peers - Student Experience
- Public Doctoral/Research-Extensive Universities: Ohio University Peers - Finances
- Public Doctoral/Research-Extensive Universities: Ohio University Peers - Faculty Salary
- Public Doctoral/Research-Extensive Universities: Ohio University Peers - Race/Ethnicity
- Public Doctoral/Research-Extensive Universities: Ohio University Peers - Institutional Characteristics
- Public Doctoral/Research-Extensive Universities: Ohio University Peers - Tuition and Financial Aid
  
- Ohio Public Universities: Headcount Enrollment at State-Supported Universities, University Main and Regional Campuses: Fall 2013
- Ohio Public Universities: Degrees Awarded, University Main and Regional Campuses: 2012 – 2013
- Institutional Outcomes Measures
- Graduation Rates for First-Time Full Time Freshmen Who Began Study in 2005, Baccalaureate Degrees – University Main Campuses
- Persistence for First-Time Full Time Degree-Seeking Students, University Main Campuses: 2010 to 2011
- Annualized Full-Time Undergraduate & Graduate Fees, University Main and Regional Campuses: 2013 – 2014
- Award of Financial Aid to Full-Time Freshmen, University Main and Regional Campuses: Fiscal Year 2010 - 2011
- Ohio Public Universities Comparative Data Measures
- Comparison of Mean ACT Scores



**Public Doctoral/Research-Extensive Universities  
Ohio University Peers - Peer Assessment**

---

	<u>US News Rank (Public)</u>	<u>US News Peer Assessment Score</u>
Ohio University	68	2.9
Colorado State University, Fort Collins	60	2.9
Iowa State University, Ames	47	3.2
Oklahoma State University, Stillwater	73	2.6
Oregon State University, Corvallis	73	2.9
University of Missouri - Columbia, MO	44	3.3
University of New Hampshire, Durham	44	2.9
University of Rhode Island, Kingston	81	2.7
University of South Carolina, Columbia, SC	55	2.9
University of Utah, Salt Lake City	60	3.0
West Virginia University, Morgantown	94	2.6

---

**Public Doctoral/Research-Extensive Universities  
Ohio University Peers - Freshman Admissions Selectivity**

---

	<u>SAT/ACT 25th - 75th Percentile</u>	<u>Freshmen in top 10% of HS class</u>	<u>Freshman Acceptance Rate</u>
Ohio University	21 - 26	16%	78%
Colorado State University, Fort Collins	22 - 27	22%	75%
Iowa State University, Ames	22 - 28	26%	83%
Oklahoma State University, Stillwater	22 - 28	28%	78%
Oregon State University, Corvallis	970 - 1230	26%	79%
University of Missouri - Columbia	23 - 28	26%	82%
University of New Hampshire, Durham	990 - 1200	18%	78%
University of Rhode Island, Kingston	990 - 1180	17%	77%
University of South Carolina, Columbia, SC	1100 - 1290	30%	61%
University of Utah, Salt Lake City	21 - 27	24%	83%
West Virginia University, Morgantown	930 - 1140	17%	85%

Source: U.S. News America's Best Colleges, 2013

Web Link for further information: <http://www.ohio.edu/instres/univ/peerstudy/index.html>

## 68 Comparative Data

### Public Doctoral/Research-Extensive Universities Ohio University Peers - Retention and Graduation Rates

	<u>Freshman Retention Rate</u>	<u>Actual Graduation Rate</u>	<u>US News Predicted Graduation Rate</u>	<u>US News 2007 overperform(+)/ underperform(-)</u>
Ohio University	81%	64%	53%	11
Colorado State University, Fort Collins	84%	63%	61%	2
Iowa State University, Ames	86%	71%	66%	5
Oklahoma State University, Stillwater	79%	62%	64%	-2
Oregon State University, Corvallis	83%	60%	57%	3
University of Missouri - Columbia	85%	71%	67%	4
University of New Hampshire, Durham	87%	77%	61%	16
University of Rhode Island, Kingston	81%	63%	60%	3
University of South Carolina, Columbia, SC	87%	72%	67%	5
University of Utah, Salt Lake City	86%	59%	64%	-5
West Virginia University, Morgantown	79%	56%	55%	1

### Public Doctoral/Research-Extensive Universities Ohio University Peers - Student Experience

	<u>% of Classes under 20</u>	<u>% of Classes with 50 or More</u>	<u>Student/Faculty Ratio</u>	<u>% Living on Campus</u>
Ohio University	37%	15%	19/1	43%
Colorado State University, Fort Collins	34%	19%	17/1	25%
Iowa State University, Ames	32%	21%	18/1	34%
Oklahoma State University, Stillwater	35%	12%	20/1	45%
Oregon State University, Corvallis	28%	23%	21/1	20%
University of Missouri - Columbia	46%	15%	20/1	26%
University of New Hampshire, Durham	41%	17%	20/1	57%
University of Rhode Island, Kingston	35%	10%	16/1	44%
University of South Carolina, Columbia, SC	36%	15%	17/1	36%
University of Utah, Salt Lake City	43%	16%	13/1	14%
West Virginia University, Morgantown	35%	18%	23/1	25%

Source: U.S. News America's Best Colleges, 2013

Web Link for further information: <http://www.ohio.edu/instres/univ/peerstudy/index.html>



**Public Doctoral/Research-Extensive Universities  
Ohio University Peers - Finances**

	Total Federal, State, Local, Private Grants & Contracts	Total E & G Expenditures	Total E & G Expend. per Student FTE	Instruction Expenditures	Instruction Expend. per Student FTE	Percent Instruction Expend./ Total Expend.	Research Expenditures	Research Expend. per Full-Time Faculty	Average Alumni Giving Rate (US News)	NACUBO Endowment Value
	Ohio University	\$72,100,815	\$451,023,256	\$20,376	\$235,575,307	\$10,643	52%	\$50,228,864	\$73,220	7%
Colorado State University, Fort Collins	\$408,293,727	\$756,515,383	\$29,440	\$241,127,905	\$9,384	32%	\$218,496,395	\$227,364	8%	\$237,941,000
Iowa State University, Ames	\$224,927,181	\$797,738,011	\$28,043	\$257,329,611	\$9,046	32%	\$195,437,144	\$163,000	15%	\$555,326,000
Oklahoma State University, Stillwater	\$156,037,787	\$589,673,927	\$27,257	\$192,266,928	\$8,887	33%	\$126,130,787	\$148,564	15%	\$299,059,000
Oregon State University, Corvallis	\$231,820,167	\$681,407,953	\$29,829	\$219,172,663	\$9,594	32%	\$196,624,176	\$360,118	12%	\$465,961,000
University of Missouri - Columbia	\$233,907,140	\$793,996,657	\$24,992	\$319,116,510	\$10,044	40%	\$160,685,186	\$141,200	16%	\$624,382,000
University of New Hampshire, Durham	\$137,320,306	\$397,920,429	\$28,092	\$154,848,171	\$10,932	39%	\$147,264,794	\$262,037	8%	\$217,974,000
University of Rhode Island, Kingston	\$117,841,434	\$376,026,740	\$25,633	\$116,856,941	\$7,966	31%	\$98,919,028	\$172,033	6%	\$118,981,000
University of South Carolina, Columbia	\$249,605,456	\$677,917,271	\$24,004	\$295,142,780	\$10,451	44%	\$133,352,599	\$127,978	18%	\$417,407,000
University of Utah, Salt Lake City	\$455,413,000	\$1,467,865,000	\$55,802	\$342,028,000	\$13,003	23%	\$285,155,000	\$307,611	11%	\$575,822,000
West Virginia University, Morgantown	\$211,144,630	\$831,891,316	\$30,623	\$339,281,025	\$12,489	41%	\$169,952,197	\$184,330	14%	\$422,577,000

\*Collective system and/or foundation endowment

Source: National Center for Education Statistics IPEDS Peer Analysis System

Web Link for further information: <http://www.ohio.edu/instres/univ/peerstudy/index.html>

## 70 Comparative Data

### Public Doctoral/Research-Extensive Universities Ohio University Peers - Faculty Salary & Compensation

	<u>Professor Average Salary</u>	<u>Professor Average Compens.</u>	<u>Associate Professor Average Salary</u>	<u>Associate Professor Average Compens.</u>	<u>Assistant Professor Average Salary</u>	<u>Assistant Professor Average Compens.</u>
Ohio University	\$105,500	\$137,400	\$79,300	\$107,300	\$70,400	\$97,000
Colorado State University, Fort Collins	\$116,300	\$142,800	\$85,400	\$104,900	\$76,900	\$94,400
Iowa State University, Ames	\$122,300	\$157,300	\$88,900	\$118,500	\$78,800	\$106,500
Oklahoma State University, Stillwater	\$103,300	\$137,500	\$78,200	\$103,600	\$72,200	\$93,300
Oregon State University, Corvallis	\$112,100	\$156,000	\$88,000	\$124,400	\$77,200	\$108,200
University of Missouri - Columbia	\$117,500	\$148,900	\$78,200	\$102,000	\$64,700	\$83,600
University of New Hampshire, Durham	\$122,500	\$164,000	\$94,800	\$133,000	\$80,600	\$109,700
University of Rhode Island, Kingston	\$105,600	\$143,700	\$77,900	\$109,400	\$68,600	\$95,200
University of South Carolina, Columbia, SC	\$125,700	\$159,300	\$85,200	\$111,300	\$75,900	\$100,000
University of Utah, Salt Lake City	\$126,300	\$166,600	\$87,400	\$116,400	\$76,900	\$102,300
West Virginia University, Morgantown	\$109,900	\$132,000	\$83,000	\$101,500	\$66,300	\$81,700

### Public Doctoral/Research-Extensive Universities Ohio University Peers - Race/Ethnicity

	<u>Percent African American</u>	<u>Percent Hispanic/ Latino</u>	<u>Percent Asian Am/ Pacific Isl.</u>	<u>Percent Native American</u>	<u>Percent Caucasian</u>	<u>Percent International</u>
Ohio University	5.0%	2.4%	1.2%	0.2%	80.9%	6.4%
Colorado State University, Fort Collins	2.0%	8.2%	2.3%	0.4%	73.5%	4.2%
Iowa State University, Ames	2.6%	3.7%	2.7%	0.2%	74.5%	11.4%
Oklahoma State University, Stillwater	4.5%	4.1%	1.7%	5.5%	70.0%	6.8%
Oregon State University, Corvallis	1.3%	6.4%	7.0%	0.8%	66.7%	8.9%
University of Missouri - Columbia	7.1%	2.8%	2.3%	0.3%	77.5%	6.2%
University of New Hampshire, Durham	1.2%	2.4%	2.3%	0.3%	80.8%	2.4%
University of Rhode Island, Kingston	4.7%	7.1%	3.1%	0.3%	68.8%	1.9%
University of South Carolina, Columbia, SC	11.1%	3.6%	2.7%	0.2%	74.9%	4.3%
University of Utah, Salt Lake City	1.2%	7.5%	5.1%	0.5%	71.1%	8.5%
West Virginia University, Morgantown	4.0%	2.9%	2.0%	0.2%	82.5%	5.5%

Source: National Center for Education Statistics IPEDS Peer Analysis System

Web Link for further information: <http://www.ohio.edu/instres/univ/peerstudy/index.html>

**Public Doctoral/Research-Extensive Universities  
Ohio University Peers - Institutional Characteristics**

	<b>Calendar System</b>	<b>Total FTE Enrollment</b>	<b>Undergrad FTE Enrollment</b>	<b>Graduate FTE Enrollment</b>	<b>Percent Part Time Undergrad</b>	<b>Percent Part Time Graduate</b>	<b>Percent Graduate Enrollment</b>
Ohio University	Semester	22,135	18,803	3,332	10%	21%	15%
Colorado State University, Fort Collins	Semester	25,697	21,308	4,389	5%	34%	17%
Iowa State University, Ames	Semester	28,447	24,657	3,790	2%	19%	13%
Oklahoma State University, Stillwater	Semester	21,634	18,452	3,182	5%	35%	15%
Oregon State University, Corvallis	Quarter	22,844	19,132	3,712	7%	11%	16%
University of Missouri - Columbia	Semester	31,771	25,772	5,999	2%	15%	19%
University of New Hampshire, Durham	Semester	14,165	12,496	1,669	1%	24%	12%
University of Rhode Island, Kingston	Semester	14,670	12,407	2,262	4%	18%	15%
University of South Carolina, Columbia	Semester	28,241	22,218	6,023	3%	16%	21%
University of Utah, Salt Lake City	Semester	26,305	19,959	6,346	12%	9%	24%
West Virginia University, Morgantown	Semester	27,166	21,688	5,478	3%	13%	20%

**Public Doctoral/Research-Extensive Universities  
Ohio University Peers - Tuition & Financial Aid**

	<b>% of Freshmen Receiving Financial Aid</b>	<b>% of Freshmen Receiving Federal Grant Aid</b>	<b>% of Freshmen Receiving State/Local Grant Aid</b>	<b>Institution Grant Aid per Total Freshmen</b>	<b>In-State Undergrad Tuition &amp; Fees</b>	<b>Out-of-State Undergrad Tuition &amp; Fees</b>	<b>In-State Graduate Tuition &amp; Fees</b>	<b>Out-of-State Graduate Tuition &amp; Fees</b>
Ohio University	82%	27%	17%	\$1,939	\$10,282	\$19,246	\$9,510	\$17,502
Colorado State University	75%	25%	18%	\$2,291	\$8,649	\$24,441	\$9,986	\$22,166
Iowa State University	88%	24%	2%	\$4,036	\$7,726	\$19,838	\$8,788	\$20,728
Oklahoma State University	88%	29%	24%	\$4,210	\$7,442	\$19,457	\$6,565	\$19,309
Oregon State University	86%	32%	22%	\$2,250	\$8,138	\$22,322	\$12,845	\$19,757
Univ. of Missouri - Columbia	84%	23%	30%	\$3,323	\$9,257	\$23,366	\$9,132	\$21,907
University of New Hampshire	84%	22%	7%	\$5,149	\$16,422	\$28,882	\$15,199	\$27,639
University of Rhode Island	91%	26%	26%	\$6,271	\$12,450	\$28,016	\$12,920	\$24,994
Univ. of S. Carolina, Columbia	92%	20%	55%	\$2,567	\$10,488	\$27,644	\$11,672	\$24,596
University of Utah	64%	24%	8%	\$2,603	\$7,139	\$22,642	\$6,281	\$19,989
West Virginia University	88%	28%	35%	\$2,048	\$6,090	\$18,868	\$7,040	\$19,854

Source: National Center for Education Statistics IPEDS Peer Analysis System

Web Link for further information: <http://www.ohio.edu/instres/univ/peerstudy/index.html>

## 72 Comparative Data

### Ohio Public Universities Headcount Enrollment at State-Supported Universities and Regional Campuses Fall 2013

Institution	Campus	Undergraduates	Graduates	Professionals	Grand Total
<b>University Main Campuses</b>					
Bowling Green State University*		15,461	1,815	0	17,276
Central State University		2,019	32	0	2,051
Cleveland State University		12,359	4,803	568	17,730
Kent State University		23,027	5,666	479	29,172
Miami University		15,739	2,774	0	18,513
Ohio State University		45,081	9,749	3,568	58,398
Ohio University		23,504	4,592	690	28,786
Shawnee State University		4,232	88	0	4,320
University of Akron		20,807	4,239	527	25,573
University of Cincinnati		25,478	9,020	1,301	35,799
University of Toledo		16,127	3,234	1,445	20,806
Wright State University*		13,390	2,835	440	16,665
Youngstown State University*		12,651	1,048	70	13,769
<b>University Branch Campuses</b>					
Bowling Green State University*	Firelands Campus	2,386	0	0	2,386
Kent State University	Ashtabula Campus	2,354	2	0	2,356
	East Liverpool Campus	1,675	2	0	1,677
	Geauga Campus	2,659	7	0	2,666
	Salem Campus	1,854	2	0	1,856
	Stark Campus	4,850	50	0	4,900
	Trumbull Campus	3,084	27	0	3,111
	Tuscarawas Campus	2,387	33	0	2,420
	Miami University	Hamilton Campus	4,628	46	0
	Middletown Campus	2,939	2	0	2,941
Ohio State University	Agricultural Technical Institute	677	0	0	677
	Lima Campus	1,131	19	0	1,150
	Mansfield Campus	1,255	54	0	1,309
	Marion Campus	1,336	35	0	1,371
	Newark Campus	2,393	54	0	2,447
Ohio University	Chillicothe Campus	2,330	0	0	2,330
	Eastern Campus	1,091	0	0	1,091
	Lancaster Campus	2,596	0	0	2,596
	Southern Campus	2,012	0	0	2,012
	Zanesville Campus	2,042	0	0	2,042
University of Akron	Wayne Campus	2,338	5	1	2,344
University of Cincinnati	Clermont Campus	4,585	44	0	4,629
	Raymond Walters Campus	5,763	89	0	5,852
Wright State University*	Lake Campus	1,180	46	0	1,226

\*Numbers provided are for Fall 2012. Data for Fall 2013 was not finalized at time of publication.

Source: Ohio Board of Regents - HEI Student Enrollment Query

**Ohio Public Universities - Degrees Awarded  
University Main and Regional Campuses  
2012 - 2013**

Institution	Campus	Associate	Bachelor	Masters	Prof.	Doctoral
<b>University Main Campuses</b>						
Bowling Green State University		—	2,802	781	—	84
Central State University		—	258	1	—	—
Cleveland State University		—	2,117	1,411	178	44
Kent State University		—	4,735	1,462	9	165
Miami University		215	3,734	668	—	49
Ohio State University		322	9,548	2,759	969	695
Ohio University		140	6,070	1,252	162	111
Shawnee State University		281	426	28	—	—
University of Akron		651	2,993	1,119	176	100
University of Cincinnati		90	4,615	2,646	515	230
University of Toledo		71	2,856	1,039	433	112
Wright State University		—	2,442	1,121	137	39
Youngstown State University		197	1,503	328	23	12
<b>University Branch Campuses</b>						
Bowling Green State University	Firelands Campus	236	—	—	—	—
Kent State University	Ashtabula Campus	290	7	—	—	—
	East Liverpool Campus	124	1	—	—	—
	Geauga Campus	96	2	—	—	—
	Salem Campus	112	42	—	—	—
	Stark Campus	122	11	—	—	—
	Trumbull Campus	94	2	—	—	—
	Tuscarawas Campus	263	1	—	—	—
Ohio State University	Agricultural Technical Institute	131	—	—	—	—
Ohio University	Chillicothe Campus	206	—	—	—	—
	Eastern Campus	21	—	—	—	—
	Lancaster Campus	107	—	—	—	—
	Southern Campus	177	—	—	—	—
	Zanesville Campus	123	—	—	—	—
University of Akron	Wayne Campus	76	—	—	—	—
University of Cincinnati	Clermont Campus	456	31	—	—	—
	Raymond Walters Campus	565	34	—	—	—
Wright State University	Lake Campus	89	6	—	—	—

Source: Ohio Board of Regents - HEI Degree/Certificate Earned Query

## 74 Comparative Data

## Ohio Board of Regents Statistical Profile Institutional Outcomes Measures

STUDENT CHARACTERISTICS	University Main Campuses Combined (Average)	Ohio University
<b>Other Diversity Measures</b>		
Part-Time	19%	26%
Over Age 24	17%	26%
Male	48%	40%
Female	52%	60%
Ohio Students	84%	83%
1st Generation College	37%	31%
<b>FIRST-YEAR STUDENT EXPERIENCES</b>		
<b>Class Size:</b>		
Median Lecture Class Size*	25	24
Median Lab Class Size*	19	17
<b>Faculty:</b>		
Percent taking any course section taught by tenured or tenure-track faculty	88%	93%
<b>Remediation:</b>		
Percent of 1st-year students requiring developmental coursework in math*	20%	8%
Percent of 1st-year students requiring developmental coursework in English*	12%	0%
<b>Persistence:</b>		
Percent of first-year students persisting one year later (retention)*	76%	81%
<b>Time &amp; Credits to Degree:</b>		
Median years to degree	4.3	3.8
Average credit hours (semester hrs)	138	139
<b>Graduation Rate:</b>		
Percent of first-time students earning a baccalaureate degree at same institution in six years or less	58%	63%

\*Data not updated for current year. Number shown is from prior year's Statistical Profiles.

Source: Ohio Board of Regents - Statistical Profiles 2013-14 updates

**Graduation Rates for First-Time Full Time Freshmen Who Began Study in 2006  
Baccalaureate Degrees - University Main Campuses**

<u>Institution</u>	<u>6 Year Institution Graduation Rate*</u>
Bowling Green State University	58%
Central State University	27%
Cleveland State University	34%
Kent State University	51%
Miami University	79%
Ohio State University	82%
Ohio University	63%
Shawnee State University	20%
University of Akron	40%
University of Cincinnati	62%
University of Toledo	45%
Wright State University	41%
Youngstown State University	32%

\*Institution Graduation Rate is a federal statistic measuring the percentage of an entering class who graduate by a certain time later at the same institution.

Source: Ohio Board of Regents - Statistical Profiles 2013-14 update

**2009 to 2010 Persistence for First-Time Full Time Degree-Seeking Students  
University Main Campuses**

<u>Institution</u>	<u>Persistence Rate Same Institution</u>	<u>Persistence Rate at Any State-Supported College or University in Ohio</u>	<u>% of First-Time First-Year Students Who Are Degree- Seeking &amp; Full-Time</u>
Bowling Green State University	75%	86%	99%
Central State University	46%	54%	98%
Cleveland State University	63%	76%	79%
Kent State University	78%	87%	94%
Miami University	88%	92%	99%
Ohio State University	93%	95%	99%
Ohio University	81%	91%	98%
Shawnee State University	54%	64%	94%
University of Akron	69%	78%	94%
University of Cincinnati	81%	86%	93%
University of Toledo	64%	76%	91%
Wright State University	71%	82%	96%
Youngstown State University	68%	72%	90%

Source: Ohio Board of Regents - Statistical Profiles 2011-12 update, March 2012

## 76 Comparative Data

### Annualized Full-Time Undergraduate and Graduate Fees: 2013 - 2014

Institution	Campus	Undergraduate		Graduate**	
		In-State	Out-of-State	In-State	Out-of-State
<b>University Main Campuses*</b>					
Bowling Green State University		\$10,590	\$17,898	\$11,662	\$18,970
Central State University		\$6,058	\$13,510	\$6,372	\$10,314
Cleveland State University		\$9,548	\$12,728	\$13,595	\$25,515
Kent State University		\$9,816	\$17,776	\$10,444	\$17,960
Miami University		\$13,748	\$29,538	\$13,054	\$28,312
Ohio State University		\$10,037	\$25,756	\$12,425	\$30,089
Ohio University		\$10,446	\$19,410	\$9,510	\$17,502
Shawnee State University		\$7,176	\$12,290	\$8,739	\$20,593
University of Akron		\$10,056	\$18,420	\$8,578	\$13,987
University of Cincinnati		\$10,784	\$25,816	\$14,182	\$25,696
University of Toledo		\$9,054	\$18,174	\$14,226	\$24,460
Wright State University		\$8,542	\$16,546	\$12,514	\$21,258
Youngstown State University		\$8,130	\$14,130	\$10,565	\$13,775
<b>University Branch Campuses</b>					
Bowling Green State University	Firelands Campus	\$4,930	\$12,238		
Kent State University***	Ashtabula Campus	\$5,554	\$13,514		
	East Liverpool Campus	\$5,554	\$13,514		
	Geauga Campus	\$5,554	\$13,514		
	Salem Campus	\$5,554	\$13,514		
	Stark Campus	\$5,554	\$13,514		
	Trumbull Campus	\$5,554	\$13,514		
	Tuscarawas Campus	\$5,554	\$13,514		
Miami University***	Hamilton Campus	\$5,072	\$14,166		
	Middletown Campus	\$5,072	\$14,166		
Ohio State University	Agricultural Technical Institute	\$7,140	\$22,860		
	Lima Campus	\$7,140	\$22,860		
	Mansfield Campus	\$7,140	\$22,860		
	Marion Campus	\$7,140	\$22,860		
	Newark Campus	\$7,140	\$22,860		
Ohio University***	Chillicothe Campus	\$4,974	\$9,510		
	Eastern Campus	\$4,778	\$6,624		
	Lancaster Campus	\$4,974	\$9,510		
	Southern Campus	\$4,778	\$6,624		
	Zanesville Campus	\$4,974	\$9,510		
University of Akron	Wayne Campus	\$6,116	\$12,788		
University of Cincinnati	Clermont Campus	\$5,210	\$12,302		
	Raymond Walters Campus	\$5,890	\$14,516		
Wright State University	Lake Campus	\$5,728	\$13,732		

\*Based on Fall 2013 full-time charges or 15 credit hrs and either 2 semesters or 3 quarters. Amounts shown include both instructional & general/facilities fees.

\*\*Graduate fees reflect tuition for general masters and doctoral level programs: medical, law and other specialty programs are not included here.

\*\*\*Denotes campuses having a two-tiered fee structure; the amounts shown reflect lower division undergraduate fees only.



## Award of Financial Aid to Full-Time Freshmen: 2010 - 2011

Institution	Campus	Federal Grants Avg. Award	State Grants Avg. Award	Institution Grants Avg. Award	Federal Loans Avg. Award
<b>University Main Campuses</b>					
Bowling Green State University		\$4,580	\$1,119	\$4,410	\$6,630
Central State University		\$5,610	NC	\$3,571	\$6,840
Cleveland State University		\$5,831	\$959	\$4,300	\$5,888
Kent State University		\$4,944	\$1,068	\$3,850	\$6,940
Miami University		\$5,478	\$861	\$5,702	\$6,719
Ohio State University		\$4,618	\$1,434	\$6,075	\$6,662
Ohio University		\$4,768	\$1,334	\$3,588	\$6,575
Shawnee State University		\$4,431	\$574	\$2,781	\$5,772
University of Akron		\$4,689	\$860	\$5,152	\$6,560
University of Cincinnati		\$5,101	\$952	\$5,471	\$5,743
University of Toledo		\$5,117	\$1,022	\$4,703	\$6,304
Wright State University		\$4,893	\$1,090	\$2,664	\$6,593
Youngstown State University		\$4,921	\$1,015	\$4,069	\$6,241
<b>University Branch Campuses</b>					
Bowling Green State University	Firelands Campus	\$4,509	NC	\$1,370	\$6,268
Kent State University	Ashtabula Campus	\$4,787	NC	\$1,311	\$6,361
	East Liverpool Campus	\$5,012	NC	NC	\$6,510
	Geauga Campus	\$4,481	NC	\$832	\$5,495
	Salem Campus	\$4,578	NC	\$1,261	\$5,934
	Stark Campus	\$4,539	\$822	\$1,615	\$5,207
	Trumbull Campus	\$4,375	NC	\$903	\$6,416
	Tuscarawas Campus	\$4,611	NC	\$1,156	\$6,228
	Miami University	Hamilton Campus	\$4,414	NC	\$1,542
Ohio State University	Middletown Campus	\$4,832	NC	\$1,120	\$5,951
	Agricultural Technical Institute	\$3,947	NC	\$2,097	\$5,878
	Lima Campus	\$4,228	\$4,422	\$911	\$5,513
	Mansfield Campus	\$4,517	NC	\$1,352	\$5,548
	Marion Campus	\$4,989	NC	\$2,128	\$4,899
	Newark Campus	\$4,597	NC	\$2,114	\$5,398
Ohio University	Chillicothe Campus	\$4,856	NC	\$2,053	\$6,596
	Eastern Campus	\$4,080	NC	\$1,672	\$5,151
	Lancaster Campus	\$4,726	\$2,193	\$1,586	\$6,150
	Southern Campus	\$5,073	NC	\$1,741	\$6,336
	Zanesville Campus	\$4,365	\$926	\$1,715	\$5,710
University of Akron	Wayne Campus	\$4,507	\$690	\$2,717	\$5,560
University of Cincinnati	Clermont Campus	\$4,945	NC	\$1,593	\$5,442
	Raymond Walters Campus	\$4,911	\$2,023	\$1,803	\$5,098
Wright State University	Lake Campus	\$4,604	\$544	\$2,329	\$5,586

NC = Not Calculated (fewer than 6 students received such aid.)

Source: Ohio Board of Regents - Statistical Profiles, March 2013

## 78 Comparative Data

### Public Universities in Ohio Comparative Data Measures University Main Campuses

	Undergraduate FTE	Graduate FTE	Total FTE	Freshmen Receiving Any Financial Aid	Freshmen Receiving Federal Aid	Freshmen Receiving Institutional Aid	Freshman Acceptance Rate
Bowling Green State University	14,506	1,483	15,989	96%	41%	75%	74%
Central State University	2,078	13	2,091	97%	85%	79%	37%
Cleveland State University	10,669	3,409	14,078	92%	54%	49%	63%
Kent State University	20,885	4,479	25,364	90%	40%	57%	83%
Miami University	15,791	1,378	17,169	75%	21%	67%	73%
Ohio State University	41,982	11,062	53,044	82%	20%	69%	64%
Ohio University	20,979	3,845	24,824	89%	30%	58%	78%
Shawnee State University	4,097	67	4,164	94%	65%	32%	82%
University of Akron	18,840	3,055	21,895	91%	50%	36%	97%
University of Cincinnati	20,843	7,087	27,930	83%	24%	53%	67%
University of Toledo	15,435	4,074	19,509	99%	52%	87%	95%
Wright State University	11,592	2,391	13,984	89%	48%	53%	69%
Youngstown State University	10,771	719	11,489	96%	60%	35%	87%

Source: U.S. News and World Reports; Ohio Board of Regents - Statistical Profiles

## Public Universities in Ohio Comparative Data Measures University Main Campuses

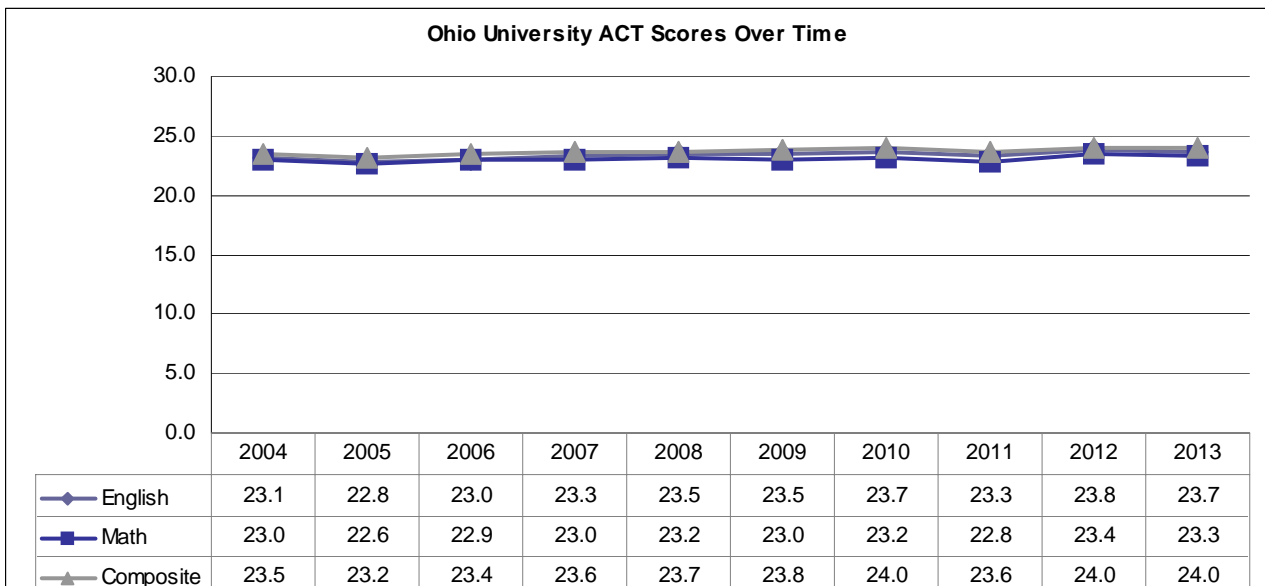
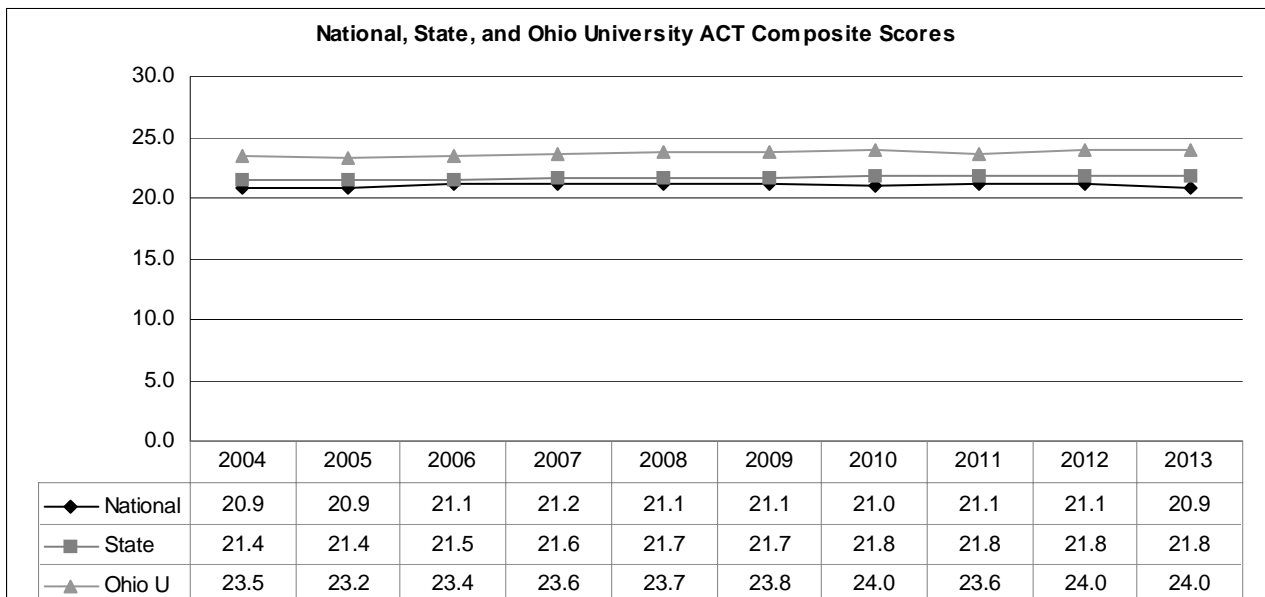
	Freshmen Top Ten Percent of HS Class	ACT Comp 25th-75th Percentile	Student Faculty Ratio (to 1)	% of Students Living on Campus	% of Classes w/ Under 20 Students	Cost of Instr. per FTE	Endowment (1000s)
Bowling Green State University	12%	19 - 24	18	44%	35%	\$12,629	\$166,186
Central State University	7%	14 - 18	13	52%	61%	\$13,097	\$2,009
Cleveland State University	12%	19 - 24	19	8%	33%	\$14,491	\$6,474
Kent State University	13%	20 - 25	21	29%	47%	\$12,048	\$37,558
Miami University	36%	24 - 29	18	48%	30%	\$15,482	\$534,315
Ohio State University	54%	26 - 30	19	25%	30%	\$19,548	\$2,348,193
Ohio University	16%	21 - 26	19	43%	37%	\$13,100	\$408,987
Shawnee State University	10%	17 - 23	19	23%	45%	\$10,211	\$13,170
University of Akron	12%	18 - 24	21	15%	39%	\$11,701	\$188,366
University of Cincinnati	20%	22 - 27	16	19%	43%	\$15,053	\$834,929
University of Toledo	16%	18 - 25	20	15%	37%	\$15,391	\$47,043
Wright State University	14%	18 - 24	22	19%	32%	\$13,187	\$101,756
Youngstown State University	11%	17 - 23	18	7%	36%	\$11,756	\$191,081

Source: U.S. News and World Reports ; Ohio Board of Regents - Statistical Profiles

80 Comparative Data

## Ohio University Athens Campus Comparison of Mean ACT Scores

The following graphs depict mean ACT scores for Ohio University in comparison to national and state of Ohio mean ACT scores, as well as a comparison of mean ACT scores at Ohio University over time. In 2013, the mean composite ACT score at Ohio University was 24.0, which was greater than both the national and state mean composite scores of 20.9 and 21.8, respectively.



Web Link for further information: <http://www.ohio.edu/institres/student/ACTClassProfile.pdf>

## Historical Information Contents

---

The historical information section contains student headcount enrollment broken down by gender and by student rank, as well as the number of degrees granted over time. In addition, this section contains changes in budget and faculty-staff compensation over time.

- Athens Campus Enrollment History by Gender: 1984 – 2013
- Athens Campus Enrollment History by Student Rank: 1994 – 2013
- History of Degrees Granted: 1983-84 to 2012-13
- Changes in Budget and Faculty-Staff Compensation: 1993-94 to 2013-14



**Ohio University Athens Campus\***  
**Enrollment History by Gender: 1984 - 2013**

<b>Year</b>	<b>Male</b>	<b>% of Total</b>	<b>Female</b>	<b>% of Total</b>	<b>Total</b>
2013	11,065	48.8%	11,592	51.2%	22,657
2012	10,672	49.1%	11,052	50.9%	21,724
2011	10,654	48.8%	11,194	51.2%	21,848
2010	10,429	48.5%	11,079	51.5%	21,508
2009	10,262	48.2%	11,041	51.8%	21,303
2008	10,107	48.9%	10,565	51.1%	20,672
2007	10,005	49.0%	10,430	51.0%	20,435
2006	9,847	48.7%	10,360	51.3%	20,207
2005	9,512	48.0%	10,321	52.0%	19,833
2004	9,318	47.1%	10,472	52.9%	19,790
2003	9,378	46.9%	10,629	53.1%	20,007
2002	9,255	46.2%	10,787	53.8%	20,042
2001	9,171	46.4%	10,574	53.6%	19,745
2000	9,062	46.6%	10,378	53.4%	19,440
1999	8,890	46.3%	10,330	53.7%	19,220
1998	8,978	46.6%	10,306	53.4%	19,284
1997	9,018	46.9%	10,216	53.1%	19,234
1996	9,011	47.3%	10,029	52.7%	19,040
1995	8,993	46.9%	10,175	53.1%	19,168
1994	8,922	47.2%	9,962	52.8%	18,884
1993	8,756	47.3%	9,749	52.7%	18,505
1992	8,680	47.5%	9,603	52.5%	18,283
1991	8,642	48.2%	9,287	51.8%	17,929
1990	8,512	48.3%	9,118	51.7%	17,630
1989	8,451	48.9%	8,839	51.1%	17,290
1988	8,543	50.0%	8,556	50.0%	17,099
1987	8,319	51.6%	7,817	48.4%	16,136
1986	8,288	53.1%	7,316	46.9%	15,604
1985	8,172	54.6%	6,789	45.4%	14,961
1984	8,111	56.1%	6,351	43.9%	14,462

\* Prior to 2011, headcounts include on-campus Lifelong Learning enrollments.

Web Link for further information: [http://www.ohio.edu/institres/factbook/factenrl\\_hist.html](http://www.ohio.edu/institres/factbook/factenrl_hist.html)

**Ohio University Athens Campus\***  
**Enrollment History by Student Rank: 1994 - 2013**

Year	New Freshmen	Total Undergraduate	Total Graduate	Total Osteopathic Medical	Total Enrollment
2013	4,244	17,375	4,743	539	22,657
2012	3,888	17,007	4,204	513	21,724
2011	3,883	17,302	4,054	492	21,848
2010	3,976	17,212	3,645	467	21,324
2009	4,072	17,124	3,595	463	21,182
2008	3,985	16,738	3,353	446	20,537
2007	4,006	16,644	3,269	437	20,350
2006**	4,084	16,562	3,151	433	20,146
2005	4,165	16,761	2,534	430	19,725
2004	3,795	16,640	2,636	428	19,704
2003	3,672	16,795	2,742	425	19,962
2002	3,703	16,854	2,672	433	19,959
2001	3,778	16,695	2,543	423	19,961
2000	3,661	16,290	2,621	416	19,327
1999	3,449	16,218	2,522	415	19,155
1998	3,442	16,332	2,507	402	19,241
1997	3,310	16,185	2,589	415	19,189
1996	3,171	16,081	2,494	422	18,997
1995	3,402	16,271	2,453	419	19,143
1994	3,226	15,949	2,501	405	18,855

\* Does not include on-campus Lifelong Learning enrollments.

\*\*Beginning in 2006, all graduate student enrollments are at the Athens campus.

Web Link for further information: <http://www.ohio.edu/institres/student/FallHeadcntFTE.html>



## Ohio University: History of Degrees Granted 1983-84 to 2012-13

Year	Associate's	Bachelor's	Master's	Doctoral	D.O.	Total
2012-13	774	6,070	1,252	160	113	8,369
2011-12	747	5,465	1,187	133	113	7,645
2010-11	688	4,630	1,023	158	109	6,608
2009-10	620	4,046	1,202	166	110	6,144
2008-09	620	3,918	886	166	103	5,693
2007-08	606	4,025	956	147	106	5,840
2006-07	552	3,970	894	162	104	5,682
2005-06	635	4,243	924	124	104	6,030
2004-05	509	4,222	980	147	97	5,955
2003-04	456	4,148	1,050	111	102	5,867
2002-03	461	3,991	987	111	104	5,654
2001-02	402	3,969	950	113	94	5,528
2000-01	394	3,754	1,006	106	99	5,359
1999-00	367	3,898	966	120	102	5,453
1998-99	407	3,894	922	132	90	5,445
1997-98	368	3,805	984	133	106	5,396
1996-97	411	3,669	1,028	114	96	5,318
1995-96	451	3,639	1,030	132	96	5,348
1994-95	521	3,535	966	116	85	5,223
1993-94	401	3,392	932	102	99	4,926
1992-93	408	3,497	880	89	80	4,954
1991-92	377	3,447	871	116	79	4,890
1990-91	375	3,243	896	103	90	4,707
1989-90	351	3,130	779	104	75	4,439
1988-89	285	2,833	847	95	102	4,162
1987-88	260	2,488	739	74	93	3,654
1986-87	219	2,495	795	92	93	3,694
1985-86	210	2,437	751	73	81	3,552
1984-85	257	2,422	746	75	69	3,569
1983-84	233	2,499	860	69	70	3,731

Web Link for further information: <http://www.ohio.edu/instres/factbook/factdeg.html>

86 Historical Information

**Changes in Budget and Faculty-Staff Compensation  
Operating Funds: 1993-94 to 2013-14**

<b>Fiscal Year</b>	<b>Trustees Approved Budget</b>	<b>Percent Change</b>	<b>Compensation Increase for Contract Employees</b>	<b>Classified Increase</b>
2013-14	N/A	N/A	3.00	3.00
2012-13	\$334,984,000	4.4	2.00	2.00
2011-12	\$320,766,000	1.3	1.67	1.67
2010-11	\$316,730,000	-1.3	1.00	1.00
2009-10	\$320,876,000	5.5	0.00	0.00
2008-09	\$304,240,000	5.4	3.00	3.00
2007-08	\$288,633,000	-8.9	3.00	3.00
2006-07	\$316,940,000	4.5	3.00	3.00
2005-06	\$303,228,000	1.9	3.00	3.00
2004-05	\$297,524,000	1.4	3.50	3.50
2003-04	\$293,453,000	9.9	2.00	2.00
2002-03	\$267,139,000	3.4	3.00	3.00
2001-02	\$258,258,000	5.8	3.00	3.00
2000-01	\$244,130,000	6.5	4.25	4.25
1999-00	\$229,340,000	6.0	3.00	3.00
1998-99	\$215,134,200	6.9	3.50	3.50
1997-98	\$201,245,874	6.0	4.00	4.00
1996-97	\$189,839,000	7.4	4.00	4.00
1995-96	\$176,692,000	8.0	4.50	4.50
1994-95	\$163,586,000	6.0	6.00	6.00
1993-94	\$154,316,000	7.3	5.00	5.00

Web Link for further information: <http://www.ohio.edu/instres/factbook/budget.html>





**OHIO**  
UNIVERSITY

*<http://www.ohio.edu/instres/>*

**Office of Institutional Research  
Ohio University  
Computer Services Center 301  
Athens, OH 45701-2979  
Tel: 740-593-1059  
Fax: 740-593-0574**

